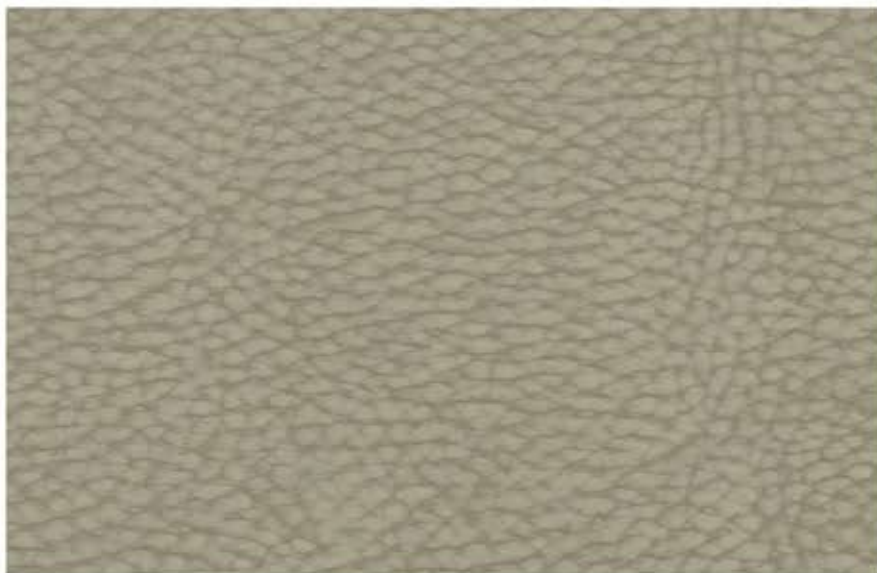


# Band 3 : Lismore Vinyl



**Putty**



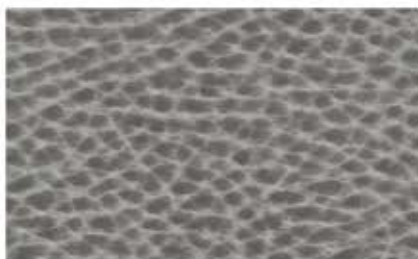
**Porcelain**



**Dark Taupe**



**Mist**



**Frost**



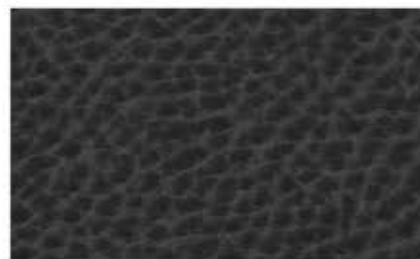
**Charcoal**



**Oatmeal**



**Truffle**



**Carbon**



**Nutmeg**



**Bark**

**Excalibur Furniture Ltd.**

Columbia Metals Building, Unit E, Ronald Close, Kempston Bedfordshire MK42 7SH. UK

T: +44 (0) 1908 327100 sales@efchairs.com www.efchairs.com



## Band 3 : Lismore Vinyl

Page 2 of 2



Almond



Sand



Toffee



Tan



Russet



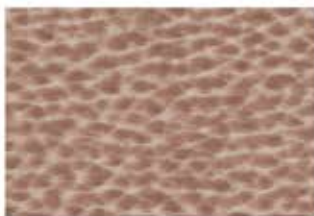
Picante



Ruby



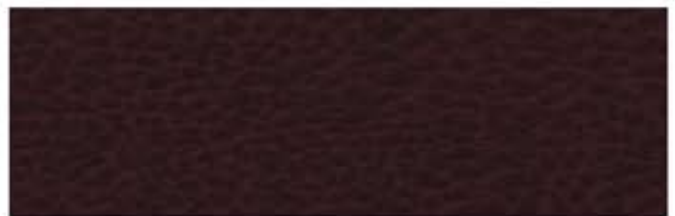
Garnet



Blush



Moonlight



Thistle



Olive



Juniper



Lichen



Storm



Ocean



Slate Blue



Aegean



Dark Sapphire

COMPOSITION 69% PVC 3% PU 14% Cotton 14% Polyester, END USE Upholstery, Outdoor Upholstery Waterproof

FABRIC TYPE Vinyl, USABLE WIDTHS 138 CM, MARTINDALE 200,000, Weight 750 g/m2

PERFORMANCE FEATURES Anti-bacterial, Stain-resistant, COMMODITY CODE 5903109000, FIRE RETARDANT TYPE Inherent

FEATURES : Anti-bacterial, Stain-resistant, Waterproof, Flame retardant: BS5852 Source 5, BS7176 med Hazard Source 0,1,5 testing over CMHR foam, BS EN 1021-1&2 (Cig & Match), IMO 8.

Do not Machine wash, fully immerse, dry clean or apply other chemical stain removers.

\* Remove dye from denim garments immediately as they will permanently stain if not dealt with promptly

**We would recommend ordering a sample to see the variation on a larger piece of fabric.**  
Excalibur Furniture Ltd.



Columbia Metals Building, Unit E, Ronald Close, Kempston Bedfordshire MK42 7SH. UK

T: +44 (0) 1908 327100 sales@efchairs.com www.efchairs.com

