

Band 2 : Dollaro Faux Leather

Page 1 of 2



Amethyst



Anthracite



Apple Green



Aqua



Azure



Biscuit



Black



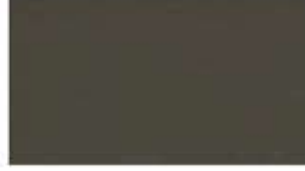
Blue



Blush



Bronze



Brown



Burgundy



Buttercup



Chestnut



Clover



Coral



Coyote



Dark Blue



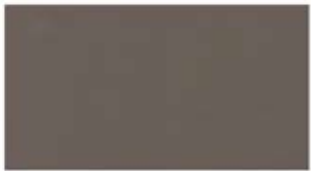
Dark Brown



Deep Red



Fossil



Fudge



Gold



Green



Gunmetal



Ivory



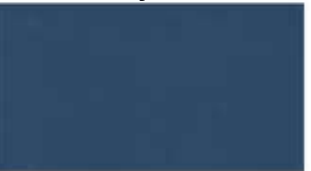
Ivy



Khaki



Lime-Green



Marine Blue



Mulberry



Mustard

Excalibur Furniture Ltd.

Columbia Metals Building, Unit E, Ronald Close, Kempston Bedfordshire MK42 7SH. UK

T: +44 (0) 1908 327100 sales@efchairs.com www.efchairs.com



Band 2 : Dollaro Faux Leather



Ballerina



Blue-Lilac



Fire



Olive



Petrol



Pewter



Platinum



Plum



Prussian Blue



Pumpkin



Red



Rose Gold



Royal Blue



Rust



Salsa



Seal Grey



Silver



Soft Jade



Stone



Sunflower



Tan



Taupe



Teal



Violet



Wine



Yellow

COMPOSITION 84% PVC 16% Cotton, END USE Upholstery, FABRIC TYPE Woven, USABLE WIDTHS 140 CM, MARTINDALE 100,000+,
Weight 690 g/m2, PERFORMANCE FEATURES Anti-bacterial, Anti Fungal, Crib 5 (BS7176), IMO FTPC Part 8

We would recommend ordering a sample to see the variation on a larger piece of fabric.

Excalibur Furniture Ltd.

Columbia Metals Building, Unit E, Ronald Close, Kempston Bedfordshire MK42 7SH. UK

T: +44 (0) 1908 327100 sales@efchairs.com www.efchairs.com

