

## Range 3 : Antilles Aruba

EXCALIBUR  
*Furniture*



13 AMBER



14 CHERRY



01 SMOKE



12 MOSS



07 FOREST



06 SEASPRAY



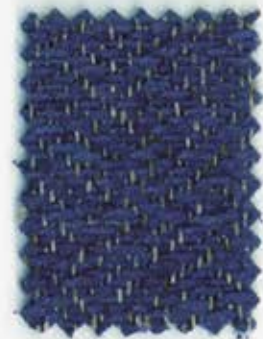
02 FEATHER



05 TRUFFLE



11 NAVY



10 SAPPHERE



03 RON



04 ONYX



09 NDIGO



08 DUSK

Note: Actual fabrics may vary in colour due to digital reproduction  
Please contact us and request fabric samples prior to placing orders.

**Excalibur Furniture Ltd.**

Columbia Metals Building, Unit E, Ronald Close, Kempston Bedfordshire MK42 7SH UK

T: +44 (0) 1908 327100 sales@efchairs.com www.efchairs.com



**BCFA**  
member

## Range 3 : Antilles Bonaire

EXCALIBUR  
*Furniture*



14 PEAR



15 PUMPKIN



02 PEBBLE



18 CRANBERRY



17 CARMINE



16 SPICE



05 ENGINE



03 PEWTER



11 HEATHER



10 LILAC



01 RAIN



07 OATMEAL



08 LATTE



2 CASCADE



04 STEEL



06 JET



09 BARK



13 M DNIGHT

Note: Actual fabrics may vary in colour due to digital reproduction  
Please contact us and request fabric samples prior to placing orders.

**Excalibur Furniture Ltd.**

Columbia Metals Building, Unit E, Ronald Close, Kempston Bedfordshire MK42 7SH UK

T: +44 (0) 1908 327100 sales@efchairs.com www.efchairs.com



**BCFA**  
member

## Range 3 : Antilles Curacao

EXCALIBUR  
*Furniture*



12 PLANTAIN



13 TIGERLILLY



02 SHELL



08 JUNGLE



11 ASTRO



14 CARDINAL



03 CINDER



07 PETROL



09 ATLANTIC



05 GRAPE



04 CARBON



01 SHADOW



10 NK



06 SURF

Note: Actual fabrics may vary in colour due to digital reproduction  
Please contact us and request fabric samples prior to placing orders.

**Excalibur Furniture Ltd.**

Columbia Metals Building, Unit E, Ronald Close, Kempston Bedfordshire MK42 7SH UK



T: +44 (0) 1908 327100 sales@efchairs.com www.efchairs.com



**BCFA**  
member

## ANTILLES

### FLAME RESISTANCE:

Upholstery	BS7176. Medium Hazard BS5852 Part 2 Ignition Source 5 (Crib 5) When tested over CMHR foam – density approx. 36kg/m <sup>3</sup>		
IMO	FTPC Part 8 (Upholstery)		
USA.	NFPA 260 Class 1 (UFAC) CAL117/13		
Colour Match	Colour may vary from one fabric to another If an exact match is required, please ask for a stock cutting.		
Composition	100% Polyester		
Width	138 cm		
Weight	Aruba	505 g/m <sup>2</sup> (FR backcoated)	
	Bonaire	590 g/m <sup>2</sup> (FR backcoated)	
	Curacao	600 g/m <sup>2</sup> (FR backcoated)	
Martindale	Aruba	40,000	
	Bonaire	100,000	
	Curacao	90,000	
Wyzenbeek:	Aruba	42,000 double rubs (cotton duck)	
	Bonaire	96,000 double rubs (cotton duck)	
	Curacao	93,000 double rubs (cotton duck)	
Usage	Severe Contract Upholstery		
Cleaning			

Note: Actual fabrics may vary in colour due to digital reproduction  
Please contact us and request fabric samples prior to placing orders.

### Excalibur Furniture Ltd.

Columbia Metals Building, Unit E, Ronald Close, Kempston Bedfordshire MK42 7SH UK

T: +44 (0) 1908 327100 sales@efchairs.com www.efchairs.com

