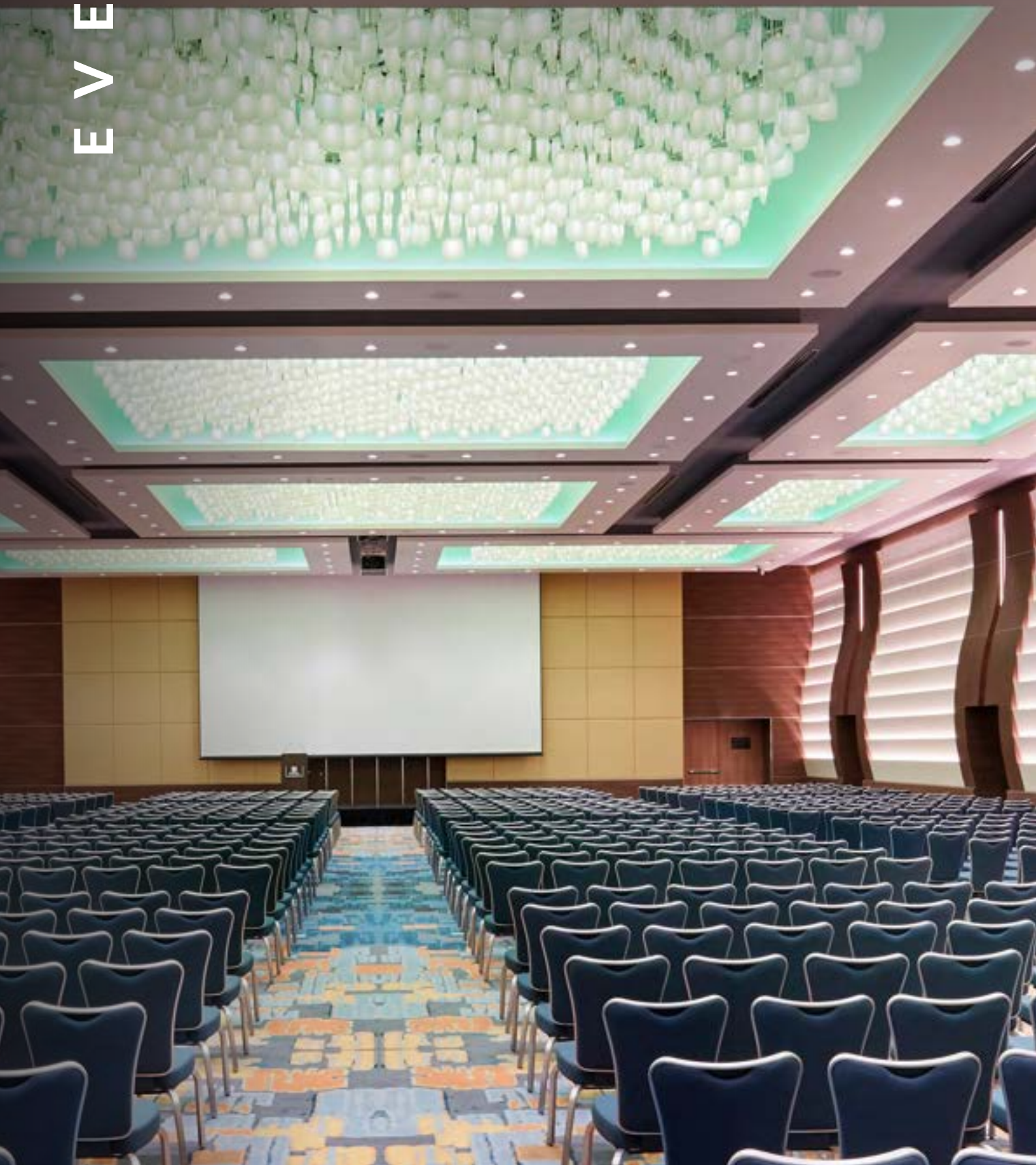


EVENTS

EXCALIBUR  
*furniture*





# EVENTS

Excalibur supply High-End Hospitality Furnishings with typical clients including landmark properties and hospitality venues in the UK and around the world. Please visit [www.efchairs.com](http://www.efchairs.com) to see lots of global installations.

From our website it is also possible to take a virtual tour of our extensive UK showroom where you can see chairs, tables and associated accessories in a variety of finishes and fabrics.

If you require something different to the hotel next door, we recommend BESPOKE manufacture. We provide design concepts for approval, full colour renders and physical samples where appropriate.

Please contact us to request any of the brochures shown below.



## EVENTS

Our EVENTS brochure contains most of our standard ranges of dual-purpose conference & banquet chairs.

Of particular importance is the luxury aluminium Chiavari chair not to be confused with the cheap, high maintenance wooden equivalents.

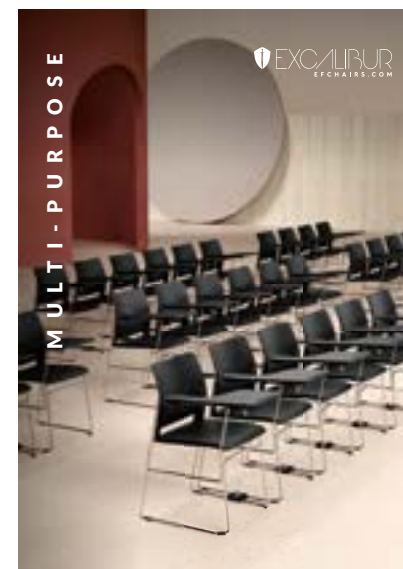
Also included are the popular Clarent shield back chair, Trio cantilever meeting room chairs, several folding table systems and associated accessories.



## HOSPITALITY

With a particular focus on Bespoke manufacture this brochure also majors on our world-renowned Wood Wrap™ finish.

Our most popular standard ranges are included and also featured in this brochure is the new MEETING+ chair with an introduction to our unique SMARTCHARGE™ system.



## MULTI PURPOSE

A range of 12 multi-purpose stacking chairs suitable for a variety of applications and environments including contemporary conference venues. With a strong emphasis on modern minimalist design, superior stacking, best in class linking and writing tablets.

The collection includes high-density stacking chairs, an impressive new range characterised by its delicate curved lines and breathable mesh back.

The stylish **CaM** chair is for dedicated Conference and Meeting facilities and this includes a four-leg task chair and a modern Cantilever version. The excellent **laKENDO** collection has won a gold award at NeoCon Chicago.



## SMARTCHARGE™

The reputation of your conference facilities rests on the satisfaction of delegates and organisers.

Leading properties strive to stand out from the crowd and now with SmartCharge™ at your venue you can, mains electricity is not required so tables can be positioned anywhere.

It is only natural for conference delegates to want their smartphones next to them at all times and for their devices to remain charged so request our SmartCharge™ brochure to see how this unique system works.



## SOFT SEATING

Our collection of Soft Seating provides solutions for a variety of hospitality environments including bedrooms, receptions, collaborative areas and all-day dining.

Configure your chair by selecting the model you require and then there is a selection of base styles available.

We look forward to guiding you effortlessly through this simple process and providing renders where appropriate.



*Stack 10 high*

Model Shown:  
The original  
Chameleon chair

## Chameleon



Chameleon



Quick Fit™ Cover



Impressive Finishing

- Chameleon chairs have simple clean lines with low profile upholstery.
- The optional Quick Fit™ covers pull over the chair and secure in place on the underside of the seat using Velcro fastenings. No tools or skilled labour is required.
- Polished steel frames matt or gloss. Other finishes on request.





Courtesy of The Grove, Chandler's Cross, Hertfordshire





*Stack 8 high*

Model Shown:  
Chameleon II

## Chameleon II



Chameleon II



Chameleon II



**Simple to use self-supporting  
chair trolley.  
Approved to BS EN 13671**

- Chameleon II has a horizontal stitch detail on all faces that give the chair a stylish padded effect.
- Polished steel frames matt or gloss. Other finishes available on request.
- Stack 8 high freestanding or 10 high on the self-supporting trolley





*Stack 8-10 high*

Model Shown:  
Aluminium Chiavari AC1

## Aluminium Chiavari



**Aluminium Chiavari**



**Comfortably stack 8-10**



Not to be confused with the high maintenance wooden equivalents our aluminium Chiavari chair is zero maintenance and comes with a 10 year structural guarantee.

Shown to best effect in one of our wood wrap frame finishes we offer a choice of 30 finishes all at the same price as well as various solid RAL colours.

The dished backrest and webbed seat cushion ensure a high level of comfort so our Aluminium Chiavari chair is even suitable for extended seating situations.





*Stack 6-8 high*

Model Shown:  
GBS 3

## Grand Ballroom Series



**Model: GBS 3**



**Model: GBS 3**



**Optional Removable Seat**

One of the finest aluminium ballroom chairs in the world.

Each section of the bamboo profile aluminium tube is cut, welded and polished by hand to create the intricate design of the Grand Ballroom Chair.

Please see our website for further information.

Model GBS 4 opposite.



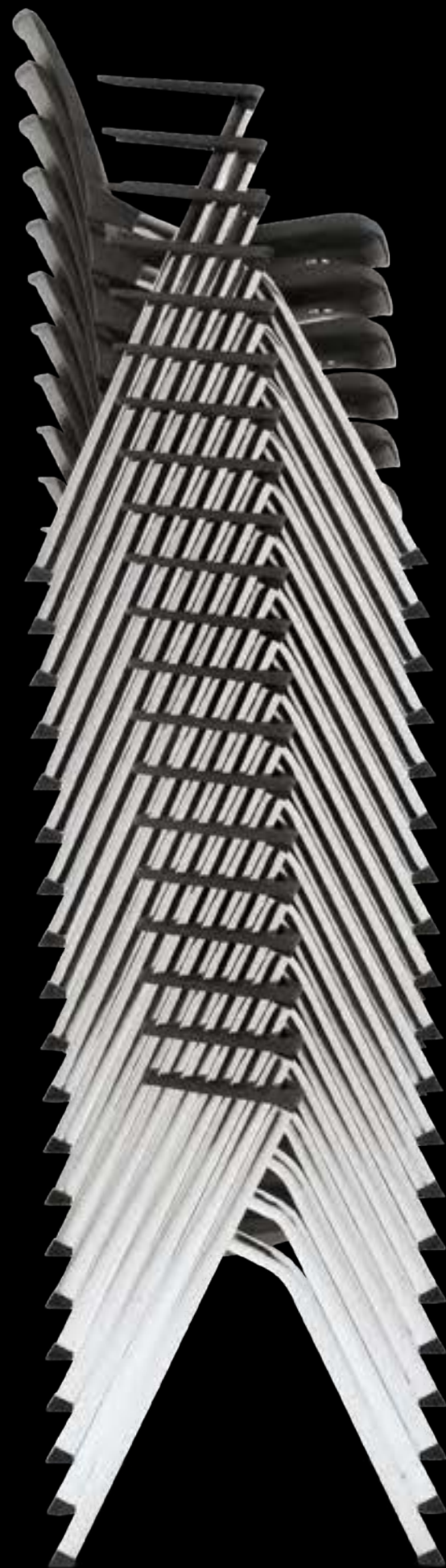
# laKendo

A truly flexible, multi-purpose chair with excellent ergonomic design, best in class linking and impressive vertical stacking.

leKendo is available with a plastic seat that is 45cm wide or as recommended with a padded seat that is 47cm wide.



laKendo with arms, padded seat  
and anti-panic writing tablet  
Ref: LK1a PS WT



Maximum  
stack 20 high





*Stack 10 high*

Model Shown:  
Clarent SB1

## Clarent



**Model: SB1**



**Model: CL3**



**Model: CL2**

The Clarent collection includes several award winning chairs with features including moulded seats, dished backrests and stacking rails that improve stacking and significantly reduce wear.

Meets BS EN 13761 Test Level 2 (Extreme Use)

By far the most popular model is the classic SB1 shield back chair.

## Raptor

Raptor chairs grace some of the finest ballrooms and event spaces around the world.

Raptor chairs have tapered legs and a fully encased seat cushion both features being an unusual attribute for stackable seating.

We offer Raptor chairs with plain backs as shown below and following customer demand we now offer a choice of three decorative backs shown on page 19.

Raptor chairs are comfortable and frequently specified in a classic or more contemporary finish as shown below.



Models Shown:  
Raptor R1A & R1



## Raptor



Model: R3



Model: R4



Model: R5

Raptor seating is now available with plain backs and three decorative backs as shown.

Designed not to look like traditional stackable seating.

The fan back on model R4 and the X back on model R5 are especially popular.

Pleated back & concealed handhold on model R3.

Stack 10 high







Courtesy of The Hilton Riyadh Hotel & Residencies, Saudi Arabia





## Modena

MODENA is a comfortable high-density stacking chair for contemporary conference venues and big public spaces. Available with and without armrests, the sled version stacks up to 30 units.

MODENA chairs have plastic seats and backs so they are exceptionally easy to maintain. There is a choice of 5 plastic colours available as standard, please contact us for further information.







Model Shown:  
Scimitar S4  
(Wood Wrap Finish)

## Scimitar S2 Flex Back Chairs

Excalibur currently offers three ranges of flex back chairs namely: Scimitar, Ergo II & Templar.

The Scimitar range includes four models with the back rests of the chairs set within an aluminium surround; clever concealed handholds are available as a no cost option.

Ergo II flex back chairs have discreet lumbar support and this range has received an independent Ergonomics Excellence Award from SATRA.

Templar is a classic range of flex back seating and recent projects have involved several modified designs so please contact us to discuss your requirements.



Scimitar S2 Flex Back Chairs



*Stack 3 high*

Model Shown:  
Trio TR3

## Trio



Model: TR2



Model: TR3



Model: CaM 1a MB

**Trio** and **CaM** chairs are for dedicated conference and meeting facilities.

Model TR3 has a comfortable double curvature high back whilst Model TR2 has a stylish black mesh back and integral handle.

Frames are polished chrome and we offer a wide range of fabrics, faux leathers and real leather.





*Stack 8-10 high*

Model Shown:  
Twist TW1

## Twist



**Model: TW1**



**Conference Seat™**



**Model: TW1**

As a twist on the square aluminium tube often associated with stackable seating; chairs in our Twist range have triangular profile aluminium frames.

Important features include the comfortable

- Conference Seat™
- Discreet lumbar support
- Stacking rails
- Concealed handholds
- Clear non marking feet

## Multi-Purpose Seating



NU

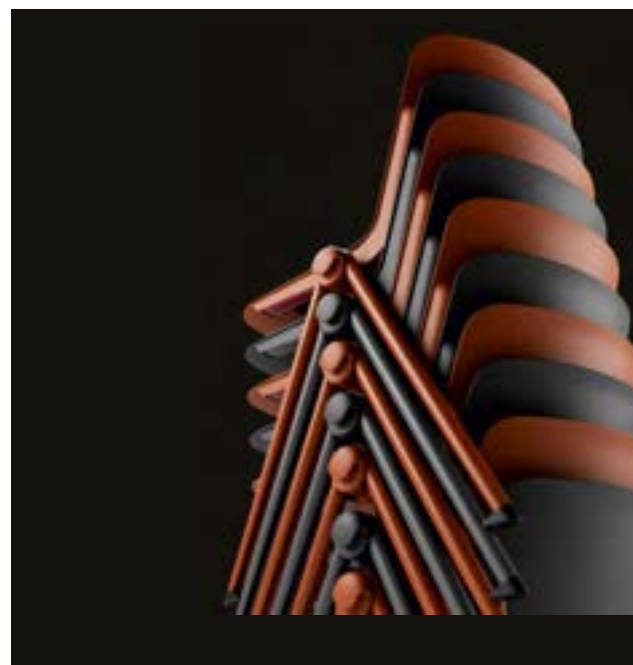
Excalibur offer twelve ranges of multi-purpose stacking chairs suitable for a variety of applications and environments. With a strong emphasis on contemporary minimalist design, superior stacking, best in class linking and writing tablets.

Samples of all models are available or you are welcome to visit our extensive showroom to allow full consideration.

**Please request our Multi-Purpose brochure.**



MESH



STAX

## Multi-Purpose Seating

Our multi-purpose collection is ideal for contemporary conference venues. This collection includes high-density stacking chairs and **MESH** an impressive new range characterised by its delicate curved lines and breathable mesh back.

The stylish **CaM** chair is intended for dedicated Conference and Meeting facilities and this includes a four-leg task chair and a modern Cantilever version.

**laKENDO** has won a gold award at NeoCon Chicago, good design is paired with excellent ergonomics and these chairs stack twice as high as traditional stacking chairs with the obvious advantages this brings.



laKENDO (stack up to 20 pcs)





## Bespoke (Case Study)



**Wood Wrap Finish.  
Product Code: HB001**

A client was experiencing frame failures of chairs in their restaurant.

We were asked to produce a guaranteed aluminium alternative that had the appearance of a wooden chair.

The result was a high back dining chair that also stacks hence this is now being used as a dual purpose chair.

## Bespoke (Case Study)



In this instance Excalibur were asked to supply an aluminium chair with similar design intent to a wooden chair being considered.

We were able to produce a suitable alternative with a wood wrap frame finish at a fraction of the price being considered.

The chairs supplied are covered by a 10 year structural guarantee and they can stack.

Product Code: BB001







| Courtesy Hyatt Regency, London – The Churchill

RAPTOR R1 Chair

## Wood Wrap™ (five-stage)



The chairs shown in the top photo are **Raptor R4** chairs in our walnut Wood Wrap™ and the chairs shown in the picture directly above are **Raptor R1** chairs in our popular limewash Wood Wrap™

Wood Wrap™ frame finishes are available on most of the aluminium chair ranges in our HOSPITALITY collection, please contact the sales office for further information.

Excalibur use a clever process to give the look of real wood whilst retaining the practical benefits of aluminium including strength and low maintenance.

Wood Wrap™ frame finishes are far more durable than dated powder coating, in fact any marks caused during handling or use, simply wipe away with a damp cloth.

Not many chair manufacturers offer Wood Wrap™ as this is very labour-intensive and can only be carried out by time served craftsman. The Wood Wrap™ process cannot be automated despite our best efforts.

Some manufacturers offer a form of Wood Wrap™ but they don't follow our five-stage process which results in a superior seamless finish.

Customers prefer a Wood Wrap™ aluminium chair to timber chairs main reasons being the timber chairs are heavy, high maintenance and stacking heights are usually limited necessitating more handling and storage space. Guarantee periods and life expectancy are also limited.



## Easy-Fold I (Aluminium Banquet Tables)



Traditional steel banquet tables are heavy whereas our aluminium versions are not, handling is easier and less damage occurs improving your ROI.

Easy-Fold tables have the following features;

- Light yet robust
- Patented locking system
- Protective aluminium edging
- Impact resistant corners
- Once folded legs are held in place with magnets.

Tops are either nylon flock coated as shown above or High Pressure Laminate as shown on page 37.

There are 22 standard sizes in the Easy-Fold range and these conform to recommended EU guidelines for lifting weights.

Various table trolleys are available please consult our website for further information.



## Easy-Fold I (Aluminium Banquet Tables)



**High Pressure Laminate Top**

The High Pressure Laminate tops are waterproof and heatproof ideal for indoor or outdoor use.

Excaltibur offer a CAD layout service to help maximise your space  
Please consult our website for further information.

### Rectangular

EF1 120 x 45cm  
EF2 150 x 45cm  
EF3 180 x 45cm  
EF4 200 x 45cm  
EF5 220 x 45cm  
EF6 120 x 60cm  
EF7 150 x 60cm  
EF8 180 x 60cm  
EF9 120 x 75cm  
EF10 150 x 75cm  
EF11 180 x 75cm  
EF12 200 x 75cm  
EF13 240 x 75cm

### Half Round

EF14 150cm  
EF15 180cm  
EF16 220cm

### Round

EF17 90cm  
EF18 120cm  
EF19 150cm  
EF20 160cm  
EF21 180cm

### Oval

EF22 200 x 150cm



## Easy-Fold II (Meeting Tables)

Easy-Fold II is a modern linen free range of executive folding tables designed not to look like a folding table; at home in the most prestigious conference and meeting rooms there are a variety of shapes and sizes available allowing various configurations.

The substantial tops are a whopping 38mm thick yet the tables remain light in weight thanks to the honeycomb core; table tops are finished in High Pressure Laminate.

These tables have aluminium frames and an unobtrusive spring loaded folding mechanism; table legs are powder coated and can be coordinated with your chairs.

Options include linking mechanisms, modesty panels, charging points and power/data modules.

Please see page 39 for standard shapes and sizes.

Chairs shown below & opposite: Raptor R4



## Easy-Fold II (Meeting Tables)

### Rectangular

EFII 1 152 x 45cm  
EFII 2 160 x 45cm  
EFII 3 180 x 45cm  
EFII 4 200 x 45cm  
EFII 5 240 x 45cm  
EFII 6 152 x 60cm  
EFII 7 160 x 60cm  
EFII 8 180 x 60cm  
EFII 9 200 x 60cm  
EFII 10 240 x 60cm  
EFII 11 152 x 75cm  
EFII 12 160 x 75cm  
EFII 13 180 x 75cm  
EFII 14 200 x 75cm  
EFII 15 240 x 75cm  
EFII 16 152 x 80cm  
EFII 17 160 x 80cm

EFII 18 180 x 80cm  
EFII 19 200 x 80cm  
EFII 20 240 x 80cm

### Half Round

EFII 21 150cm  
EFII 22 160cm

### Corner Segments

EFII 23 45cm  
EFII 24 60cm  
EFII 25 75cm  
EFII 26 80cm

### Modesty Panels

MP1 1200 x 300cm  
MP2 1600 x 300cm  
MP3 1800 x 300cm









# AirFold™ (Lightweight Conference Tables)



AirFold™ is our lightest folding table to date ideal for conference venues where frequent handling and reconfiguration is required.

An aluminium frame is concealed within the 35mm thick laminate tops significantly reducing table weight whilst retaining strength hence the reason the AirFold™ tables offer improved durability and handling.

Features of the AirFold™ table system includes:

- Lightweight & linen free
- High Pressure Laminate Tops
- Spring loaded locking mechanism
- Modern square tube legs
- In the folded position legs held in place by small magnets
- Table legs powder coated to coordinate with your chairs
- Various shapes and sizes (please see page 43)
- Optional linking, modesty panels and data modules
- Free CAD layout service for qualified enquiries



Look out for the exciting AirFold™ facelift due in late 2023

# AirFold™ (Lightweight Conference Tables)



120 x 45cm	150 x 45cm	160 x 45cm	180 x 45cm
120 x 60cm	150 x 60cm	160 x 60cm	180 x 60cm
120 x 75cm	150 x 75cm	160 x 75cm	180 x 75cm

Half Rounds  
120cm (Single Leg - Not Free Standing)  
150cm (Double Leg – Free Standing)

Corner Segments	Modesty Panels
60cm	120 x 30cm
75cm	150 x 30cm
	160 x 30cm
	180 x 30cm



Folding



Ready to Link



Linked



## Flip Top Cocktail Tables

An intelligent elegant design, space saving flip top cocktail tables.

Ø 30 mm high-precision steel tube legs are finished in a mixture of black powder coated fine structure and polished chrome.

Table tops are Ø 800 mm  
Table height is 1100 mm

A wide variety of high-pressure laminate tops are available

This table is available with SmartCharge™



## Cocktail Tables



CT1 Flip Top



CT3 Height Adjustable



CT2 Fixed Pedestal

Excalibur offers a selection of cocktail tables including;

- Flip top space saving
- Height adjustable
- Fixed pedestal
- Demountable folding

HPL tops.

For further information please visit the accessories section of our website or contact us to discuss your requirements.

Model: L5



Model: L6



Please visit the  
Equipment section  
of our website for  
dimensions and  
technical specs.

## Lecterns

Model: L1



Model: L3



Model: L2



Model: L4



Excalibur offers a refreshing selection of lecterns including our popular CLEARLY DIFFERENT™ acrylic lecterns through to more traditional wooden designs.

In addition we frequently source alternative solutions for our customers so please contact us to discuss your requirements.



# EXCALIBUR *furniture*

Unit E, Ronald Close  
Woburn Road Estate  
Kempston MK42 7SH

t: 01908 327100  
e: [sales@efchairs.com](mailto:sales@efchairs.com)  
[www.efchairs.com](http://www.efchairs.com)



**BCFA**  
member





# SOFT SEATING



EXCALIBUR  
SOFT SEATING





# REST ASSURED



**Our collection of Soft Seating provides solutions for a variety of hospitality environments including bedrooms, receptions, collaborative areas and all-day dining.**

Configure your own chair by firstly selecting the model you require and then there is a selection of base styles available 'the family'.

We look forward to guiding you effortlessly through this simple process and providing renders where appropriate.

Of course, we offer a selection of specially selected fabrics, faux leathers and faux suedes however we are very experienced in accepting specifications or COM.

On request and subject to quantities to be agreed we can customize chairs to suit your overall design.



## ROCK 3-4

A modern tub chair on a rocking base with a stylish veneered outer shell.



## MAKO 5-10

A contemporary chair characterized by its curved lines.



## KIKO 11-12

A good balance between comfort and aesthetics.



## SKARA+ 13-14

Featuring innovative forms and exceptional comfort an ideal solution for high-end hospitality environments.

## SKARA 15-16

Great for modern all-day dining. Fully upholstered or with an American-walnut veneered outer back like its big brother SKARA+ shown on pages 13 & 14.



## B-PAS™ 17-22

Bedroom and Public Area Seating.



## LOLA 23-24

For modern sophisticated public or private spaces where originality is a plus. Entirely upholstered with several frame options.



## DUO 25-32

Perfect for coordinating fabrics, distinctive curves and generous dimensions. DUO adds a tailored touch to any modern interior design.





# ROCK

A modern tub chair with a distinctive look.

**This comfort-oriented piece of furniture is characterized by its clean lines, the veneered shell and its contemporary rocking base.**

The veneered shell is available in four standard wood finishes with specials on request subject to quantity.

ROCK R



# MAKO

A contemporary comfortable chair perfect for hotel bedrooms and lobbies. This model also works particularly well with two coordinating fabrics as shown.

All of the chairs shown in this brochure are on permanent display in the by appointment Excalibur showroom.

We offer a selection of severe contract quality fabrics specially selected for our Soft Seating range and we are also pleased to accept specifications or COM.





# MAKO<sup>4xWB</sup>

A contemporary comfortable chair perfect for hotel bedrooms and lobbies.

This model also works particularly well with two coordinating fabrics as shown. All of the chairs shown in this brochure are on permanent display in the by appointment Excalibur showroom.

Shown on this page and opposite is the contemporary MAKO 4<sup>x</sup>WB (4<sup>x</sup> Wooden Base) with two coordinating fabrics.





# MAKO<sup>4LWB</sup>

**A contemporary comfortable chair perfect for hotel bedrooms and lobbies.**

Shown on this page and opposite is the MAKO 4LWB (4 Leg Wooden Base).

All of the chairs shown in this brochure are on permanent display in the by appointment Excalibur showroom.





# KIKO

A stylish ergonomic chair suitable for any space.

Kiko is fully upholstered with great attention to detail. Available on no fewer than 7 different underframes, the Kiko chair is shown to best affect on the 4<sup>x</sup>WB as shown opposite.

Various complementary tables are available including the Excalibur SMART fold table.



KIKO 4<sup>x</sup>WB



# SKARA+

**For high-end hospitality applications.**

**A modern design particularly comfortable thanks to its headrest and foot-stool versions.**

Simply elegant and timeless, SKARA+ can be fully upholstered but is most often selected with its impressive American-walnut veneered shell. Shown to best advantage on a 4\* wooden base, other base configurations are available on request.





# SKARA<sup>4LWB</sup>

Great for modern all-day dining.

Fully upholstered or with an American-walnut veneered outer back like its big brother SKARA+ shown on pages 13 & 14. Shown on this page and opposite is the mid back SKARA 4LWB (4 Leg Wooden Base).

Other base other base configurations are available on request.





# B-PAS™





# B-PAS™ 4XWB

**A 360° swivel chair designed for hotel Bedrooms & Public Area Seating.**

There is a choice of base configurations including, 4× Wooden Base as shown below and opposite.

4× Metal Pyramid Base as shown on page 21. Wooden Legs & Castors as shown on page 22. Metal Base & Castors (with or without armrests) as shown on page 17.



B-PAS™ 4XWB  
(armrests are available  
in a contrasting fabric as  
shown on page 22)



B-PAS™ 4XWB



# B-PAS™ 4XMPB

**A 360° swivel chair designed for hotel Bedrooms & Public Area Seating.**

There is a choice of base configurations including, 4× Wooden Base as shown on page 19. 4× Metal Pyramid Base as shown below. Wooden Legs & Castors as shown opposite.

Metal Base & Castors (with or without armrests) as shown on page 17 & 18.



# B-PAS™ WLC

**A 360° swivel chair designed for hotel Bedrooms & Public Area Seating.**

There is a choice of base configurations including, 4× Wooden Base as shown on page 19. 4× Metal Pyramid Base as shown opposite. Wooden Legs & Castors as shown below.

Metal Base & Castors (with or without armrests) as shown on page 17 & 18.





# LOLA

For modern sophisticated public or private spaces where originality is a plus.  
Entirely upholstered, other base configurations available on request.

We offer a wide selection of upholstery fabrics specially selected for our Soft Seating or alternatively we are happy to accept specifications or use COM.

LOLA 4\*WB



# DUO

Perfect for coordinating fabrics, distinctive curves and generous dimensions. DUO adds a tailored touch to any modern interior design.

DUO 4\*WB  
(4\* Wooden Base)



DUO R  
(Rocking Base – shown with coordinating upholstery)



DUO FMSB  
(Flat Metal Swivel Base)  
Warning: This item is heavy



DUO 4\*MPB  
(4\* Metal Pyramid Base)





# DUO FMSB

**Perfect for coordinating fabrics, distinctive curves and generous dimensions. DUO adds a tailored touch to any modern interior design.**

Shown on this page and opposite is the DUO FMSB (Flat Metal Swivel Base)  
Warning: This item is heavy.





# DUO<sup>R</sup>

Perfect for coordinating fabrics, distinctive curves and generous dimensions. DUO adds a tailored touch to any modern interior design.

Shown opposite is the DUO R (Rocking Base).





# DUO<sup>4xWB</sup>

Perfect for coordinating fabrics, distinctive curves and generous dimensions. DUO adds a tailored touch to any modern interior design.

Shown on this page is the contemporary DUO 4<sup>x</sup>WB (4<sup>x</sup> Wooden Base).



# DUO<sup>4xMPB</sup>

Perfect for coordinating fabrics, distinctive curves and generous dimensions. DUO adds a tailored touch to any modern interior design.

Shown on this page is the contemporary DUO 4<sup>x</sup>MPB (Metal Pyramid Base).

The metal Pyramid Base is polished aluminium not chrome that can dislodge.





# WIRELESS

**Wireless charging has been old news for a while now but the drawback with these 'wireless' systems is they have to be plugged in.**

**Our rechargeable batteries avoid any need for connection to the mains giving true wireless charging.**

In seconds batteries are easily removed from under the table top using the specially designed magnetic key making this anti-theft, they are also shockproof and water-proof for good measure.



# CHARGING

Battery packs also have two USB ports for fast charging tablets, power banks and other mobile devices.

When used in conjunction with our SMART table, battery packs are removed from table tops and placed in dedicated charging banks fitted to the special purpose table trolley.

Linen free table tops are easily removed, placed on the same trolley, underframes are folded and these nest together on the same trolley.





# HOSPITALITY

Excalibur is also an established supplier of High-End Hospitality Furniture including a comprehensive collection of classic and contemporary stackable seating. Typical clients include leading hotels and hospitality venues in the UK and around the world.

Please visit [www.efchairs.com](http://www.efchairs.com) for further information where you can view some global projects, study our standard ranges and take a virtual tour of our showroom.

We offer an excellent Bespoke Manufacturing service where we produce design concepts for approval, renders and physical samples where appropriate.

Everything is fire retardant and most items are supported with a 10 year no nonsense warranty.

Excalibur are permanent members of SATRA an international centre for product testing and for up-to-date guidance we choose to be a member of the British Contract Furnishing Association.





**BCFA**  
member



Unit E, Ronald Close  
Woburn Road Estate  
Kempston MK42 7SH

t 01908 327100 e [sales@efchairs.com](mailto:sales@efchairs.com)





EXCALIBUR  
*furniture*



CHAMELEON



BCFA  
member



[www.efchairs.com](http://www.efchairs.com)



# CHAMELEON



From This



Quick Fit Cover™



To This



Customers are now able to offer two or more interior schemes with one set of chairs 'for a change'

Chameleon chairs are also supplied as a stand-alone model without the Quick Fit Covers™

The appearance of Chameleon seating can be changed in a matter of moments with no tools or skilled labour required.

Quick Fit Covers™ easily pull over the chair and secure in place under the seat on the reinforced Velcro strip.

After use the Quick Fit Covers™ are hung on a special purpose mobile rail and simply wheeled away for storage.





# CHAMELEON



Stacks 6 – 8 pcs



Concealed Fastenings



Self-Supporting Trolley



Chrome Plated Finish



Brass Plated Finish



Bronze Plated Finish

With simple clean lines and impressive finishing Chameleon chairs stack 6-8 high. The self-supporting chairs trolleys have padded backs to protect chairs and locking wheels. .

The special purpose mobile rail for Quick Fit Covers™ can be seen on the back of this brochure.





# CHAMELEON



Concealed Fastenings



Special Purpose Mobile Rail



Impressive Finishing



Self-Supporting Chair Trolley



BCFA  
member





EXCALIBUR  
*furniture*



RAPTOR

Dual Profile Aluminium  
Tapered Legs  
Fully Encased Seat



BCFA  
member



[www.efchairs.com](http://www.efchairs.com)



# RAPTOR



Raptor R1

Raptor chairs grace some of the finest ballrooms and event spaces in the world.

With classic lines and generous proportions the main features of the Raptor design are the stylish tapered legs and the fully encased seat cushion an unusual attribute of stackable seating.

Chair feet are either self-levelling glides or non-marking plastic bungs.

Raptor chairs are available with retractable linking, upholstered armrests, embroidery and self-supporting chair trolleys.



Courtesy of Lochside Hotel & Spa Scotland

With an all aluminium construction Raptor chairs are available in solid, brushed or wood grain frame finishes; there is an extensive collection of recommended FR fabrics available or alternatively we are happy to accept COM or customer specifications.





# RAPTOR



Raptor R1



Concealed rear handhold  
& fully concealed fixings.

## Measurements

Width: 44 cm

Depth: 62 cm

Height: 98 cm

Weight: 7.5 kg

Stack: 6 high



Raptor R2

The chairs above are shown in our Lime wash wood grain frame finish.

Raptor chairs are frequently specified in one of our wood grain frame finishes.

Never equalled our original wood grain frame finishes are the toughest on the market.



Courtesy of Hedsor House Buckinghamshire UK





# RAPTOR



Images courtesy of The Chester Hotel Aberdeen Scotland



**BCFA**  
member



Excalibur Furniture Ltd 500 Avebury Boulevard Milton Keynes Buckinghamshire MK9 2BE England  
Tel +44 (0) 1908 327100 [sales@efchairs.com](mailto:sales@efchairs.com) [www.efchairs.com](http://www.efchairs.com)



EXCALIBUR  
*furniture*



AirFold™

Revolutionary Folding Table System



BCFA  
member



[www.efchairs.com](http://www.efchairs.com)



## AirFold™

You would never guess that the revolutionary AirFold™ table has an aluminium frame fully concealed within the top making this incredibly strong and lightweight.





## AirFold™

- Robust & Lightweight
- Folding & Linking
- Selection of Shapes/Sizes for Various Configurations



- Easy to use Modesty Panels
- Substantial 35mm Thick Tops
- High-Pressure Laminate Tops
- ABS Edging
- Smooth Low Gloss Anodite Metal Finishing
- Load Bearing Quarter Round Segments
- Layout Service on Request
- Optional Bridging Tops
- Optional Table Carts



# AirFold™

Three lengths and three widths as standard with specials available on request.

Half rounds, quarter rounds and easy to use modesty panels

## Rectangles

Model: AF1875 - 1800 x 750

Model: AF1860 - 1800 x 600

Model: AF1845 - 1800 x 450

Model: AF1575 - 1500 x 750

Model: AF1560 - 1500 x 600

Model: AF1545 - 1500 x 450

Model: AF1275 - 1200 x 750

Model: AF1260 - 1200 x 600

Model: AF1245 - 1200 x 450

## Quarter Rounds

Model: AF750 - Quarter

Model: AF600 - Quarter

Model: AF450 - Quarter

## Modesty Panels

Model: AF1830 - 1800 x 300

Model: AF1530 - 1500 x 300

Model: AF1230 - 1200 x 300

## Bridging Tops

Sizes to suit tables ordered

## Half Rounds

Model: AF15TL - 1500 Dia (Twin Leg)

Model: AF15SL - 1500 Dia (Single Leg)

Model: AF12SL - 1200 Dia (Single Leg)





## AirFold™

Stacking Pillars protect the substantial looking 35mm thick tops and ABS edging takes the customary knocks and bumps. Easy to fold, link and fit modesty panels.





AirFold™



Chairs shown below: Ergo II E21

Chairs shown on front cover: Trio TR2 cantilever chairs

Tops shown from the Formica® High Pressure Laminate Range



Please contact us to see a sample or arrange a showroom visit

Excalibur Furniture Ltd 500 Avebury Boulevard Milton Keynes  
Buckinghamshire MK9 2BE T +44 (0) 1908 327100  
[sales@efchairs.com](mailto:sales@efchairs.com) [www.efchairs.com](http://www.efchairs.com)



**BCFA**  
member



# EXCALIBUR *furniture*



TIZONA



BCFA  
member



[www.efchairs.com](http://www.efchairs.com)



# TIZONA



Tizona T1

- Dual profile aluminium frame
- Classic X back design
- CMHR foam throughout
- Brushed lacquer, solid and scratch-resistant wood grain finishes available
- Concealed handhold available
- Fully concealed fastenings
- Clear plastic feet
- Stacking 6-8 pcs
- Options: Arms, linking, logos, chair covers, trolley

## Dimensions

W46cm D58cm H94cm

Seat Height 46cm

Weight: 7.5 Kg



Marriott Park Lane London



X Back





# TIZONA



## Hilton Montenegro

Excalibur Furniture are members of The British Contract Furnishing Association and permanent members of SATRA a leading research, technology and testing centre.

We currently hold five Ergonomics Excellence Awards and have gained approval to BS EN 16139 test level 2-extreme use, the latest harmonised European standard for furniture strength, durability and safety.

This brochure shows the two models in our Tizona range the T1 classic X back design and a T2 with the Chippendale inspired back design.





# TIZONA



- Dual profile aluminium frame
- Classic X back design
- CMHR foam throughout
- Brushed lacquer, solid and scratch-resistant wood grain finishes available
- Concealed handhold available
- Fully concealed fastenings
- Clear plastic feet
- Stacking 6-8 pcs
- Options: Arms, linking, logos, chair covers, trolley

## Dimensions

W46cm D58cm H94cm

Seat Height 46cm

Weight: 7.5Kg

Scratch Resistant Wood Grain Finish



Tizona T1 Arm chair and side chairs





# TIZONA



Chippendale inspired back design

- Dual profile aluminium frame
- Chippendale inspired back
- CMHR foam throughout
- Brushed lacquer, solid and scratch-resistant wood grain finishes available
- Concealed handhold available
- Fully concealed fastenings
- Clear plastic feet
- Stacking 6-8 pcs
- Options: Arms, linking, logos, chair covers, trolley

## Dimensions

W46cm D58cm H94cm

Seat Height 46cm

Weight: 7.5 Kg



Tizona T2 chairs







Sir Francis Drake Hotel San Francisco USA

Excalibur Furniture Ltd 500 Avebury Boulevard Milton Keynes Buckinghamshire MK9 2BE  
England Tel +44 (0) 1908 327100 sales@efchairs.com www.efchairs.com

**BCFA**  
member





EXCALIBUR  
FURNITURE



WOOD YOU BELIEVE IT™



[www.efchairs.com](http://www.efchairs.com)



# WOOD YOU BELIEVE IT™

Excalibur use a clever heat transfer process to give the sumptuous look of real wood whilst retaining the practical benefits of aluminium

Great news if you like the look of wood but want to take advantage of benefits including long term durability, low maintenance and the lightness of aluminium.

Aluminium is also fully recyclable satisfying environmental considerations altogether giving a great alternative to wooden chairs

The chairs shown below comes from the Excalibur Tizona collection and the main feature of these chairs is the classic X back design.

Choose from any brushed, solid or wood grain finish

Please visit our website or contact the sales office for further assistance.



Model Code T1A & T1 Side Chair





This brochure shows a selection of Excalibur seating in our new wood grain frame finish however the company is able to finish any of our chairs in wood grain; please contact the sales office for assistance.



Shown above: Scimitar S2 and S4



# WOOD YOU BELIEVE IT™



The example shown opposite comes from the Excalibur Templar collection and the main feature of these chairs is the pleated inner back design and the body responsive fl x back.

Choose from any brushed, solid or wood grain finish

Please visit our website or contact the sales office for further assistance.



Excalibur offers our new wood grain finish on lots of the models in our range; please contact the sales office for assistance.



WG005



WG003



WG004



WG002



WG001

\*We have done our best to show true representations of colours but are limited by the printing/photographic process, if in doubt please ask for actual finish sample .



# WOOD YOU BELIEVE IT™

The chairs shown below come from the Excalibur Rapier collection and the main feature of these chairs is the decorative fan back design.

Choose from any brushed, solid or wood grain finish

Please visit our website or contact the sales office for further assistance.



Model Code Rapier RA1A & Rapier RA1 Side Chair







[www.efchairs.com](http://www.efchairs.com) [sales@efchairs.com](mailto:sales@efchairs.com)

500 Avebury Boulevard, Milton Keynes,  
Buckinghamshire MK9 2BE, England  
Tel: +44 (0) 1908 327100



EXCALIBUR  
*Furniture*



ALUMINIUM CHIAVARI

Entirely Handcrafted  
Bamboo Profile Aluminium  
10 year guarantee



BCFA  
member



[www.efchairs.com](http://www.efchairs.com)



# ALUMINIUM CHIAVARI



Not to be confused with wooden Chiavari chairs that have a limited lifetime our aluminium Chiavari chair has a 10 year structural guarantee + thanks to the webbed seat cushion and dished backrest of the chair it is comfortable and as such suitable for extended seating situations unlike the wooden equivalents.

Excalibur also use a clever heat transfer process to give the sumptuous look of real wood whilst retaining the practical benefits of aluminium and in addition to looking good wood wrap frame finishes are extremely durable which we can easily demonstrate.

Good news if you like the look of wood but want to take advantage of benefits including long term durability and zero maintenance.



Aluminium Chiavari AC 1

Stackable 6-8 high choose from a selection of solid, brushed or 30 wood grain frame finishes with an extensive collection of recommended FR fabrics; alternatively we are happy to accept COM or customer specifications.



**BCFA**  
member





EXCALIBUR  
*furniture*



RAPIER

Aluminium

Dual Profile

Decorative Back

Square to Round Legs



BCFA  
member



[www.efchairs.com](http://www.efchairs.com)



# RAPIER



Rapier RA1

Rapier chairs are constructed using dual profile aluminium tube and the distinctive oval back is fitted with a decorative aluminium fan back.

With low profile webbed seats another feature of the Rapier design is the tapered legs of the chair that seamlessly go from square at the top to round at the bottom.

Chair feet are either self-levelling glides or non-marking plastic bungs.

Rapier chairs are available with retractable linking, upholstered armrests, embroidery and self-supporting chair trolleys.



Courtesy of London Marriott County Hall



Decorative Fan Back

Choose from a selection of solid or wood grain frame finishes and an extensive collection of recommended FR fabrics; alternatively we are happy to accept COM or customer specifications.



**BCFA**  
member





EXCALIBUR  
*furniture*



TRIO (DEDICATED MEETING ROOM CHAIRS)



[www.efchairs.com](http://www.efchairs.com)

**BCFA**  
member





# TRIO



Model: TR1

- Steel Cantilever Design
- Polished Chrome Frame
- Transparent Polycarbonate Back
- Clever Floating Seat
- Flat Plastic Base (protects seat cushions when chairs are stacked)
- No Exposed Fastenings
- Low Profile leather Armrests
- CMHR foam
- Wide selection of fabrics or leathers

## Dimensions

Width 53.0cm

Depth: 51.0cm

Height: 82.0cm



Clever floating seat | w profil  
leather arms (stack 3-4 chairs)



Transparent Back





# TRIO



Model: TR2



Stack 4 - 5



Mesh Back and Top Rail



TR2 cantilever chairs with 2 x **BE DIFFERENT** folding tables  
(Please see back cover of this brochure for the TR2 Specifications)





# TRIO



Model: TR3

## Model TR3 Specificatio

- Steel Cantilever Design
- Polished Chrome Frame
- Double Curvature Back
- Moulded Seat Cushion
- Distinctive Stitch Detail on backrest
- High profile plastic arms or low profile leather arms (see page 4)
- Impressive Finishing
- CMHR foam
- Wide selection of fabrics or leathers

## Dimensions

W 57.5cm

D 53.0cm

H 103.0cm



Comfortable double curvature  
back & high profile plastic arm



Stack 3 chairs





# TRIO



Double curvature back & low profil  
black leather arms



Model: TR3



TRIO chairs with 4 x **BE DIFFERENT** flip op folding tables  
(Please see back cover of this brochure for the TR3 Specifications)





# TRIO

## Model TR2 Specificatio

- Steel Cantilever Design
- Polished Chrome Frame
- Mesh Back with moulded top rail (black only)
- Moulded Seats
- Low profile plastic arm
- Impressive Finishing
- CMHR foam
- Wide selection of fabrics or leathers for the seat cushions

### Dimensions

W 57.5cm

D 53.0cm

H 103.0cm



Model: TR2



BCFA  
member





# EXCALIBUR *furniture*



EASY-FOLD

[www.efchairs.com](http://www.efchairs.com)





# EASY-FOLD



**Rectangle Flock Coated Top**



**Half Round Flock Coated Top**



**Round Flock Coated Top**

- Super light aluminium table
- Incredibly easy to handle & fold
- Patented locking system

	EF1	120 x 45cm	5.5KG
	EF2	150 x 45cm	7.0KG
	EF3	180 x 45cm	9.0KG
	EF4	200 x 45cm	10.0KG
	EF5	220 x 45cm	12.0KG
	EF6	120 x 60cm	6.5KG
	EF7	150 x 60cm	9.0KG
	EF8	180 x 60cm	9.5KG
	EF9	120 x 75cm	8.8KG
	EF10	150 x 75cm	9.8KG
	EF11	180 x 75cm	10.9KG
	EF12	200 x 75cm	11.9KG
	EF13	240 x 75cm	13.5KG
	EF14	150cm	8.0KG
	EF15	180cm	10.0KG
	EF16	220cm	12.0kg
	EF17	90cm	9.5KG
	EF18	120cm	12.0KG
	EF19	150cm	14.5KG
	EF20	160cm	17.5KG
	EF21	180cm	19.0KG
	EF22	200 x 150cm	19.5KG

- Flock or Laminate Tops
- Protective aluminium edging
- For indoor & outdoor use

**Note:** Easy Fold tables are 73.5cm high as standard.  
Special sizes available on request.



# EASY-FOLD



**Rectangle Laminate Top**

By far the lightest and easiest to handle folding banquet table on the market.

Features include the patented spring loaded folding mechanism, aluminium frame, protective edging, impact resistant corners, a choice of flock or laminate table tops.

Table legs are folded effortlessly and in the folded position legs are held securely in place by magnets.

There is a wide range of shapes and sizes available which conform to recommended EU guidelines for lifting weights and transportation is also made easy with our special purpose table trolley.

Flush fit corners are standard on all Easy Fold rectangular tables. The nylon corners add strength, improve corner impact resistance and incorporate a stacking buffer for ease of storage.

Shown opposite is the stylish Easy Fold II table system designed for use in dedicated conference and meeting rooms. Several different shapes are available allowing interesting configurations and the optional lightweight modesty panels are attractive and easy to fit.



**Trolley**



**Legs Held in Place by Magnets**

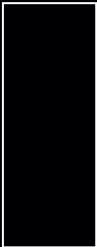


**Corner Protector**



# EASY-FOLD II

- Lightweight table system
- Linen free
- Modern design (38mm thick tops)

	EFII 1	152 x 45cm	17.0KG
	EFII 2	160 x 45cm	17.2KG
	EFII 3	180 x 45cm	17.8KG
	EFII 4	200 x 45cm	18.4KG
	EFII 5	240 x 45cm	19.1KG
	EFII 6	152 x 60cm	17.4KG
	EFII 7	160 x 60cm	17.6KG
	EFII 8	180 x 60cm	18.2KG
	EFII 9	200 x 60cm	18.8KG
	EFII 10	240 x 60cm	19.5KG
	EFII 11	152 x 75cm	17.8KG
	EFII 12	160 x 75cm	18.0KG
	EFII 13	180 x 75cm	18.6KG
	EFII 14	200 x 75cm	19.2KG
	EFII 15	240 x 75cm	19.9KG
	EFII 16	152 x 80cm	18.0KG
	EFII 17	160 x 80cm	18.2KG
	EFII 18	180 x 80cm	18.8KG
	EFII 19	200 x 80cm	19.4KG
	EFII 20	240 x 80cm	20.1KG
	EFII 21	150cm	17.2KG
	EFII 22	160cm	17.8KG
	EFII 23	45cm	2.0KG
	EFII 24	60cm	2.5KG
	EFII 25	75cm	3.0KG
	EFII 26	80cm	3.6KG

- Folding, Stacking & Optional Linking
- Choice of Laminate tops
- Optional modesty panels

**Note:** Leg Finish is either Silver or Black






# EASY-FOLD II

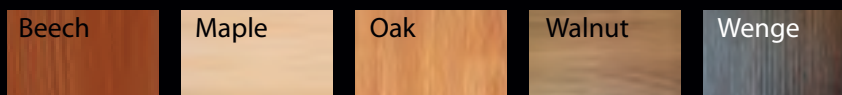


*Easy-Fold II tables shown with removable modesty panels*

	<b>Modesty Panels</b> MP1 1200 x 300cm 5.5KG MP2 1600 x 300cm 7.0KG MP3 1800 x 300cm 8.0KG
-------------------------------------------------------------------------------------	-----------------------------------------------------------------------------------------------------



*Easy-Fold II tables shown with and without a Half Round end*



**Top Choices**



# EASY-FOLD II



**Easy-Fold II** table shown with Wenge top and TR1 cantilever chairs from the **TRIO** range



**TR1** cantilever chairs from the **Trio** range

[sales@efchairs.com](mailto:sales@efchairs.com)    [www.efchairs.com](http://www.efchairs.com)

500 Avebury Boulevard, Milton Keynes,  
Buckinghamshire, MK9 2BE England  
Telephone: +44 (0) 1908 327 100

All finishes and weights are a guide only and correct at time of going to print.  
Please check before ordering.  
Issue 01/2014.



# EXCALIBUR *furniture*



PENNY

Aluminium

Dished Button Back

Thick Seat

Round Legs



**BCFA**  
member



[www.efchairs.com](http://www.efchairs.com)



# PENNY



Dished Button Back

Yes this is an aluminium stacking chair but unlike its wooden equivalents the Penny chair is low maintenance and guaranteed for 10 years.

Arguably the finest aluminium chair currently available the Penny shape back of this model gives rise to its range name.

Features include a dished button back, comfortable thick seat and this chair is especially suitable for a contrasting outer back.

Chair feet are either self-levelling glides or non-marking plastic bungs.



Ideal for contrasting back



PENNY P1

Choose from a selection of solid or wood grain frame finishes and an extensive collection of recommended FR fabrics; alternatively we are happy to accept COM or customer specifications.



**BCFA**  
member





# EXCALIBUR *Furniture*

High Density Stacking

Double Curvature Back

Padded Seat

Chrome Plated Frame



## DENSITY



**BCFA**  
member



[www.efchairs.com](http://www.efchairs.com)



# DENSITY



Double Curvature Back

Density is a space saving and comfortable seating solution. This model comfortably stacks 10 high freestanding & 25 high on the special purpose chair trolley.

The double curvature back and padded seat cushion provide comfort.

Other standard features include chrome plated frames, integral linking and clear stacking blocks avoid cushion marking when chairs are stacked. The Density chair has successfully satisfied the requirements of BS EN 16139: 2013 Test Level 2 (Extreme Use)



Stacking block avoids seat marking



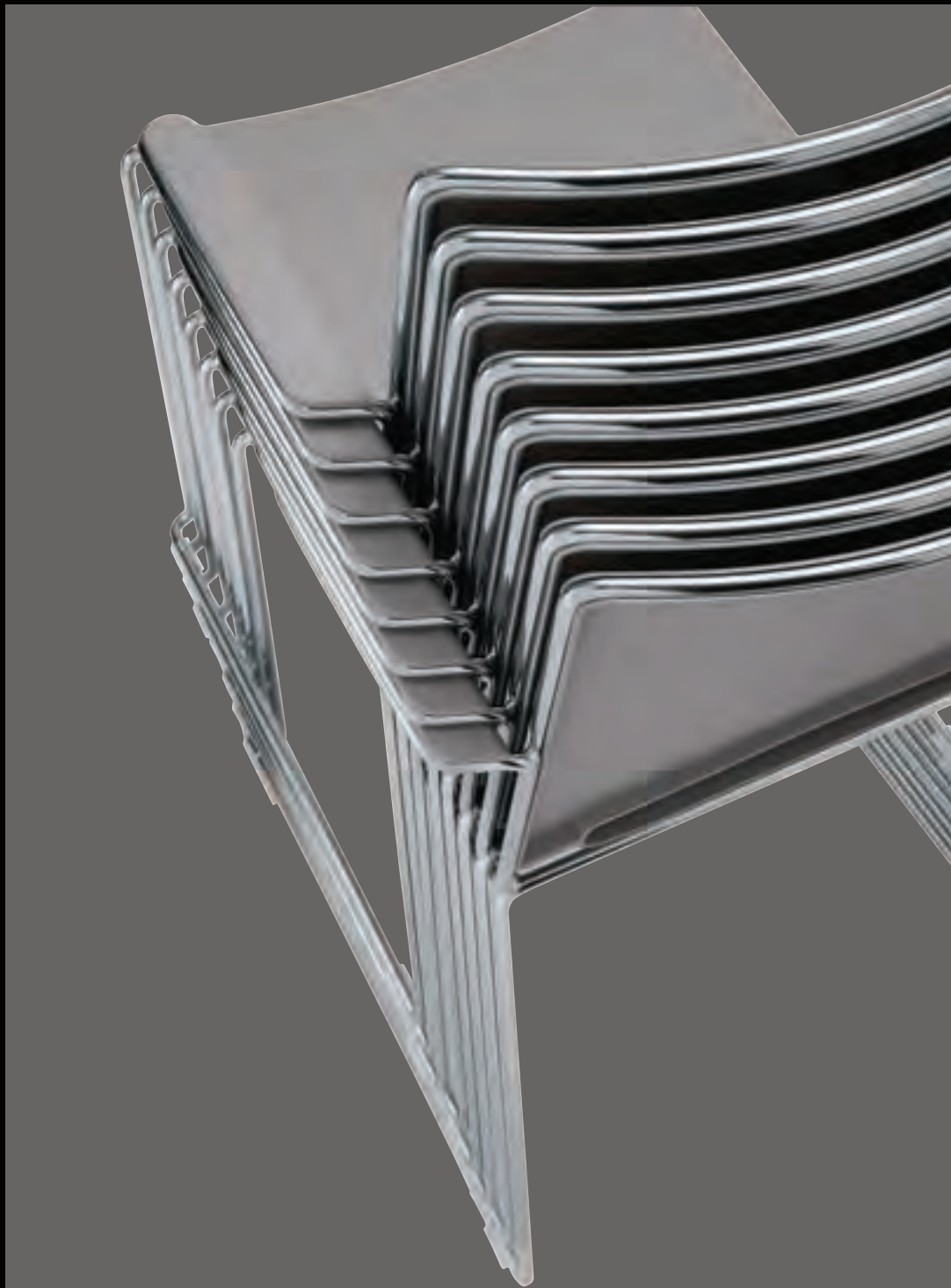
Comfortably stacks 10 high freestanding & 25 high on the special purpose Density chair trolley

Options include the special purpose chair trolley, removable table tables, numbering and a stretch chair cover for more formal banqueting.





# EXCALIBUR *furniture*



UNO



[www.efchairs.com](http://www.efchairs.com)

**BCFA**  
member





# UNO

**Uno** is a contemporary high density stacking chair with a steel rod frame powder coated black, white and grey or this can be finished in polished chrome.

The seats and backs are produced from injection moulded polypropylene; there is a selection of colours to choose from and an anti UV treatment ensures colours remain lively.

Where improved comfort is required upholstered pads can be fitted on the seats and backs and we offer a selection of 30 colours making the Uno chair even more functional and attractive.

Uno chairs stack 15 high or 35 high on the special purpose trolley shown opposite.

## **Uno U1 Side Chair Dimensions**

Width: 53cm

Depth: 57cm

Height: 81cm

Weight: 5.7kg - 7.0kg

## **Uno U1A Arm Chair Dimensions**

Width: 57cm

Depth: 57cm

Height: 81cm

Weight: 6.9Kg - 9.2Kg





# UNO

Uno options include

Armrests - Polished chrome frames - Upholstered seat & back pads - Linking (please see back page for images) - Numbering, Detachable writing tablets (as shown below) - Felt pads for hard floors - Special purpose trolleys - Matching stools for pre-function areas.



Armchairs accept a detachable writing tablet

Choose either black or white writing tablets

Chairs stack 35 - 40 high on the special purpose chair trolley



# UNO

**UNO U1** chair shown below with optional upholstered seat and back pads and below this is the same model but with optional armrests model code **UNO U1A**



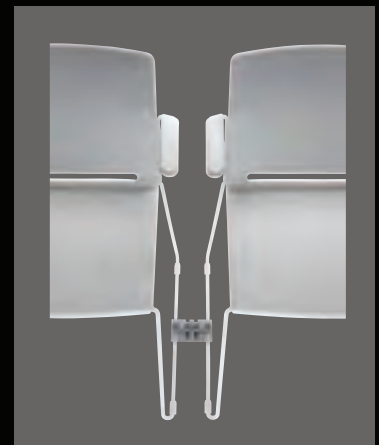
**UNO U1** Side chairs shown with upholstered panels mounted on polypropylene seats & backs



Ground level linking for side chairs



**UNO U1A** Arm chairs shown with upholstered panels mounted on polypropylene seats & backs



Ground level linking for arm chairs

All dimensions and weights are a guide only and correct at the time of going to print please check before ordering.



**BCFA**  
member





EXCALIBUR  
*furniture*



SPACE SAVER SERIES™  
Increase Venue Capacity

Curved Backrests  
Conference Seat™  
Modern Corners  
Stacking Wedge™



BCFA  
member



[www.efchairs.com](http://www.efchairs.com)



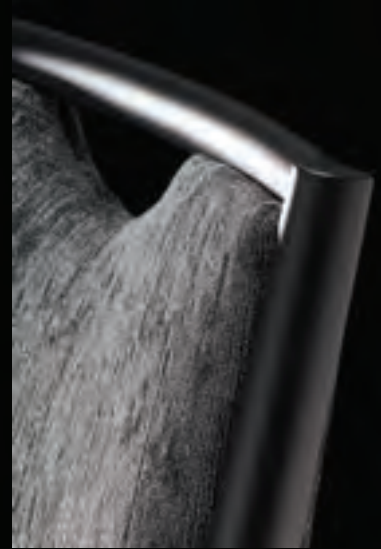
## SPACE SAVER SERIES™



Curved Backrest



Model: SS 1



Corner Detail



Conference Seat™



Stacking Wedge™

Chairs in the Space Saver Series have round profile aluminium frames with subtle tapered legs whilst the space saving dimensions allow customers to increase seating capacity.

A high degree of comfort is provided as the backrest of these chairs is curved for improved support and our superbly comfortable Conference Seat™ is fitted as standard.

Other features of the chair include the modern corners, fully concealed fastenings and our unique Stacking Wedge™ which prevents metal to metal contact when chairs are stacked.

Dimensions: Width: 42cm Depth: 54cm Height: 95cm Weight: 6.1kg Stack: 6-8 high



**BAFTA**  
member





EXCALIBUR  
*Furniture*

Contoured Shell

Low Profile Upholstery

Retractable Linking

Handgrip

Stacking Wedge™



CONTOUR



BCFA  
member



[www.efchairs.com](http://www.efchairs.com)



# CONTOUR



Model:C1



Contour chairs feature a multi contoured shell with low profile upholstery, chrome plated steel frames, fully concealed fastenings.

Other standard features include the integral handgrip, clever retractable linking which simply pushes underneath the seat when not in use and the important Stacking Wedge™ which ensures no frame contact when the chairs are stacked.

## Measurements

Width: 45cm Depth: 56cm Height: 86cm Weight: 7 kg Stack: 6-8 high





# CONTOUR



Multi Contoured Shell



Stacking Wedge™



Stacking Capacity 6-8 pcs



Flat Seat Base



Integral Handgrip



Self-Supporting Trolley

Contour chairs are independently tested and approved to BS EN 16139: 2013

The flat seat base on Contour chairs covers the retractable linking and this ensures seat cushions do not become marked when chairs are stacked.

The chair trolley for Contour chairs is self-Supporting and has a padded back to protect chairs; the wheels of the trolley are also lockable.





# CONTOUR



**BCFA**  
member



Excalibur Furniture Ltd 500 Avebury Boulevard Milton Keynes Buckinghamshire MK9 2BE England  
Tel +44 (0) 1908 327100      [sales@efchairs.com](mailto:sales@efchairs.com)      [www.efchairs.com](http://www.efchairs.com)



# EXCALIBUR *furniture*



## CLARENT

Lightweight Aluminium  
Comfortable  
Extra durable



**BCFA**  
member



[www.efchairs.com](http://www.efchairs.com)



# CLARENT



All models stack 10 high

There are five models in the Clarent range and these meet the latest European Standard for Strength Durability & Safety BS EN 13761 Test Level 2 (Extreme Use)

The Clarent collection is based around several award winning chairs with varying features including deluxe width moulded seats, dished backrests and on all models a series of stacking rails and brace bars that improve stacking and significantly reduce wear.

Clarent chairs are also available in a space saving width 42cm

All models have clear non-marking feet.



Clarent SB1



Non-Marking Feet



Clarent CL1

Choose from an extensive collection of recommended FR fabrics; alternatively we are happy to accept COM or customer specifications.

Front cover photo: Courtesy of Royal Lancaster London





# CLARENT



All models stack 10 high

With an all aluminium construction Clarent chairs are available in brushed, solid or wood grain frame finishes.

Open or concealed handholds are a no cost option.

Model CL4 shown below has a handcrafted trellis design made up of intersecting reduced scale aluminium tube that complements the profile of the chair frame.

There are no visible fastenings on all models.

## Measurements

Width: 45cm Depth: 58cm Height: 93cm

Weight: 6.0kg Stack: 10 high



Clarent CL3



Clarent CL2



Clarent CL4  
Shown with optional arms

Options include upholstered armrests, linking, numbering, book racks, logos and special purpose trolleys.

Subject to volume bespoke back shapes are also available.





# CLARENT



Image courtesy: Plaisterers Hall London UK

Model shown Clarent SB 1 shield back chair with clients logo



**BCFA**  
member



Excalibur Furniture Ltd 500 Avebury Boulevard Milton Keynes Buckinghamshire MK9 2BE England  
Tel +44 (0) 1908 327100 [sales@efchairs.com](mailto:sales@efchairs.com) [www.efchairs.com](http://www.efchairs.com)



# EXCALIBUR *furniture*



Aluminium

Bamboo Profile

Entirely Handcrafted

Upholstered Panels

Concealed Fixings



## GRAND BALLROOM SERIES



**BCFA**  
member



[www.efchairs.com](http://www.efchairs.com)



# GRAND BALLROOM SERIES



Limewash Finish

Not to be confused with apparently similar chairs that have wooden beech frames, chairs in the Grand Ballroom Series have bamboo profile aluminium frames guaranteed for comfort, durability and longevity.

The original Grand Ballroom chair GBS1 is still available and this can be seen on our website however demand is now almost exclusively for the GBS2 model shown in this brochure.

Model GBS2 has three upholstered panels in the backrest that significantly improve comfort and meet the demands of longer term seating situations.



Stack 6-8

## Measurements

Width: 44cm

Depth: 58cm

Height: 89cm

Weight: 8.0kg

Stack: 6-8 high



Stacking Wedge™

Choose from a selection of solid or wood grain frame finishes and an extensive collection of recommended FR fabrics; alternatively we are happy to accept COM or customer specifications.



**BCFA**  
member





# EXCALIBUR *furniture*



LINEAR™



BCFA  
member



[www.efchairs.com](http://www.efchairs.com)



# LINEAR



Model: L1 (no upholstered pads)

- Steel Frame
- Beech Plywood Shell
- Fifteen Wood Colours
- Stackable 10 high
- Powder Coated Finish
- CMHR foam

## Options

- Upholstered Seat Pads
- Upholstered Seat & Back Pads
- Polished Chrome Frames
- Removable Arms
- Removable Writing Tablet
- Linking
- Interchangeable numbering
- Special Purpose Cart

## Dimensions

W49cm D50cm H85cm

Seat Height 46cm

Weight: 6.5kg



Model: L2 (upholstered seat pad)



All models in the Linear range  
have show wood backs





# LINEAR



Model: L2

Linear chairs have dished backs and the ergonomic shell gives some natural flex improving comfort.

Other important features include the shaped backs that facilitate improved handling and the self-locating feet and stacking buffers that ensure chairs are easy to stack when not in use with an absolute minimum of wear and tear.



Model: L2T (with writing tablets) in the powder coated finish





# LINEAR



Model: L3 (with seat & back pad)  
Other images of Model L3 can be seen  
on the back of this brochure.

- Steel Frame
- Beech Plywood Shell
- Fifteen Wood Colours
- Stackable 10 high
- Powder Coated Finish
- CMHR foam

## Options

- Upholstered Seat Pads
- Upholstered Seat & Backs Pads
- Polished Chrome Frames
- Removable Arms
- Removable Writing Tablet
- Linking
- Interchangeable numbering
- Special Purpose Cart

## Dimensions

W49cm D50cm H85cm  
Seat Height 46cm  
Weight: 6.5kg



Model L3A (armchair)



Model L3A (armchair)





# LINEAR



Model: L2

## Weights

Side chair 6.5kg

With writing table 8.0kg

Arm chair 8.5kg



Compact foot print with vertical stacking to 10 high.

A contemporary conference & meeting chair with an ergonomically shaped multi-contoured seat shell.

All models have stunning show wood backs available in a choice of 15 wood colours

Beech – Orange – Walnut – Calvados – Wenge – Colombo – Havana – Black – Alder – Cognac Mahogany – Cherry – Palisander – Beech grey – Slate

Chair frames are either powder in grey RAL 9006 or finished in polished chrome and there is a wide selection of upholstery fabrics to select from.

Linear chairs stack vertically and offer a compact footprint with options including removable writing tablets, removable arms, linking, interchangeable magnetic numbering and special purpose carts.





# LINEAR



BCFA  
member





# EXCALBUR *furniture*



## FORMAT



**BCFA**  
member



[www.efchairs.com](http://www.efchairs.com)



# FORMAT



Model: F1



Model: F1

Model: F4



Polished Legs



Leather Legs

**FORMAT** is one of the latest ranges of luxury stackable seating from Excalibur Furniture.

With elegant steel legs and stylish hand finished corners; **FORMAT** chairs benefit from impressive clean lines and special upholstery treatments with fascinating opportunities for variation.





# FORMAT



Self-Supporting Trolley



Model: F2



Stack 6 High



Visually Impressive Stitching Detail



Polished Legs



Leather Legs

**FORMAT** chairs are ergonomically designed for maximum comfort and support and to further enhance their fresh uncommon appearance the legs of **FORMAT** chairs can be specified in:

- Polished Chrome
- Powder Coated RAL Colours
- Resilient Wood Wrap
- Upholstered Leather or Faux leather





# FORMAT



Model: F3



Model: F3



Model: F3



Chairs in the **FORMAT** range are versatile and lightweight making them suitable for leading hospitality venues.

The specially contoured backrests feature fully concealed fastenings and the important Stacking Wedge™ helps avoid frame to frame contact when chairs are stacked.





# FORMAT



Model: F4



Model: F4



Model: F4



Wood Grain Legs



Stack 6 high freestanding or 8 high on the special purpose chair trolley.

**FORMAT** chairs are tested and approved to the latest European standard for furniture Strength Durability & Safety BS EN 13761 Test Level 2 (Severe Contract Use)

**Note: Please see back cover for technical information or visit our website.**





# FORMAT

Options include unique hand stitched designs on the inner back of the chair, bespoke back shapes, retractable linking and modern armrests with or without upholstered arm pads.

A wide selection of recommended fabrics, leathers or Faux leather colors are available as standard or alternatively we are pleased to accept specifications or customers own material.

Please contact the sales office for an E brochure or hardcopy brochure of the **FORMAT** range.

**Please Note: A suitable level of handling must be taken when chairs with leather covered legs are selected; if handling standard is in doubt we recommend chairs with polished or resilient wood wrap leg finishes.**

## Average Dimensions

Width: 44cm

Depth: 57cm

Height: 87cm

Seat Height: 46cm

Weight: 6.4kg

Stacking:

6 Freestanding

8 On Trolley



**BCFA**  
member





# EXCALIBUR FURNITURE



[www.efchairs.com](http://www.efchairs.com)





# ERGO II SEATING

Model Code E21



Excalibur Furniture offer several ranges of flexible back seating including ERGO II a contemporary ergonomic collection designed to meet the requirements of today's design professionals, operators and their guests.

ERGO II seating features body responsive flexible backs that automatically adjust to suit the user's body weight and seating position.

Dished backrests, lumbar support and moulded seats are standard.

## Key Features

- Upholstered aluminium chair
- Strong lightweight frame
- Contemporary design
- Flexible backrests
- Lumbar support
- Moulded seat cushions
- Open handhold with handle
- Self locating tube profile
- Fully concealed fastenings

## Feet

Self-levelling glides or clear plastic foot bungs

## Frame Finishes

Brushed and solid frame finishes available

## Fabric

Choose from our collections, specify an alternative or supply COM 0.8mt per chair

## Dimensions

W 42cm D 57cm H 92cm    **Seat height** 46cm  
**Stack height** 8











# ERGO II SEATING

Model Code E22



ERGO seating also feature a unique self locating tube profil .

The underside of the chair is reinforced to ensure years of trouble free use and ERGO seating is available with a clever retractable linking system on request.

Another popular option is the self supporting trolley which allows chairs to be stacked and transported with the minimum of effort and the maximum of safety.

## Key Features

- Upholstered aluminium chair
- Strong lightweight frame
- Contemporary design
- Flexible backrests
- Lumbar support
- Moulded seat cushions
- Open handhold with handle
- Self locating tube profile
- Fully concealed fastenings

## Feet

Self-levelling glides or clear plastic foot bungs

## Frame Finishes

Brushed and solid frame finishes available

## Fabric

Choose from our collections, specify an alternative or supply COM 0.8mt per chair

## Dimensions

W 42cm D 57cm H 92cm    **Seat height** 46cm  
**Stack height** 8





**BCFA**  
member



Excalibur Furniture Ltd 500 Avebury Boulevard Milton Keynes Buckinghamshire MK9 2BE England  
Tel +44 (0) 1908 327100 [sales@efchairs.com](mailto:sales@efchairs.com) [www.efchairs.com](http://www.efchairs.com)



# EXCALIBUR FURNITURE



[www.efchairs.com](http://www.efchairs.com)





# TWIST SEATING

Model Code TW1



TWIST is another one of our contemporary collections of upholstered aluminium seating.

As a twist on the traditional square tube often associated with stackable seating; our TWIST collection features a stylish triangular aluminium tube frame.

The chair frame is lightweight yet extremely strong with the added benefit of fully concealed fastenings and a webbed low profile seat.

TWIST seating has full faced upholstery and a unique hand grip runs all around the back of the chair and seat making handling extremely easy.

## Key Features

- Upholstered aluminium chair
- Triangular tube profile
- Strong & lightweight
- Contemporary design
- Lumbar support
- Low profile webbed seats
- Full face upholstery with all round hand grip
- Fully concealed fastenings

## Feet

Clear plastic feet

## Frame Finishes

Brushed and solid frame finishes available

## Fabric

Choose from our collections, specify or supply  
COM 0.8mt per chair

## Available Options

- Retractable linking
- Self supporting trolley
- Upholstered armrests

## Dimensions

W 45cm D 60cm H 93cm    Seat height 47cm  
Stack height 12











# TWIST SEATING

Model Code TW2



Model Code TW3







[www.efchairs.com](http://www.efchairs.com) [sales@efchairs.com](mailto:sales@efchairs.com)

500 Avebury Boulevard, Milton Keynes,  
Buckinghamshire MK9 2BE, England  
Tel: +44 (0) 1908 327100



# EXCALIBUR *furniture*

Aluminium

Triangular Profile

Conference Seat™

Lumbar Support

Document Rack



## TWIST II



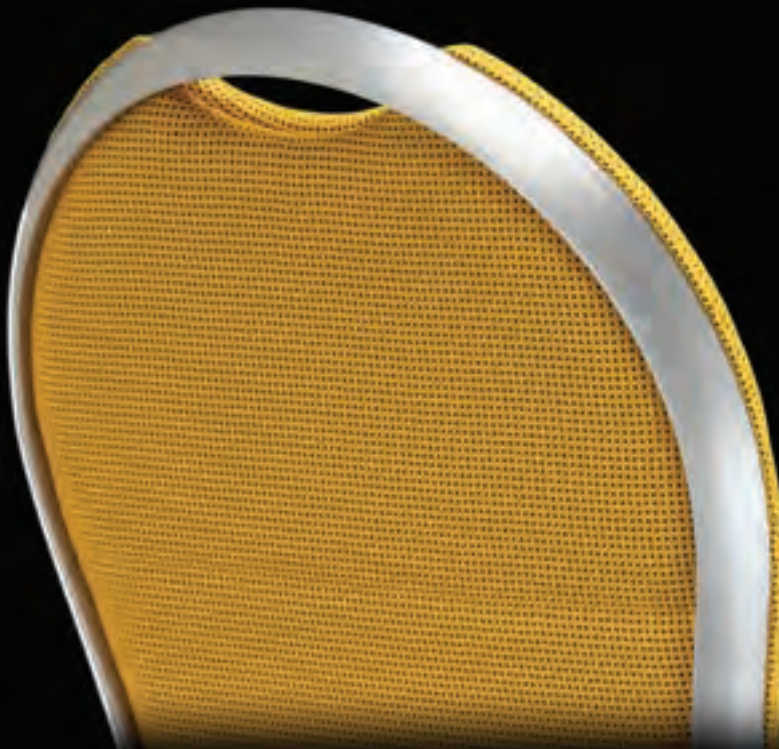
BCFA  
member



[www.efchairs.com](http://www.efchairs.com)



# TWIST II



Model: TW 24



Model: TW 24



Model: TW 24





## TWIST II



Model: TW21



Model: TW26



Model: TW23

As a twist on the traditional square tube often associated with stackable seating; chairs in our TWIST II range feature stylish Triangular aluminium tube.

Other important features include the comfortable Conference Seat™, lumbar support and the handy document rack permanently fitted beneath the seat.



Model: TW24



Model: TW22



Model: TW25

Chairs in the TWIST range have been independently tested and approved to BS EN 16139: 2013 Test Level 2 (Severe Contract Use)

TWIST has also received an Ergonomics Excellence Award from SATRA

Width: 45cm Depth: 58cm Height: 92cm Weight: 7.0kg Stack: 8 – 10





# TWIST II



Model: TW 26



**BFMA**  
member





# EXCALIBUR *Furniture*



TRIDENT



[www.efchairs.com](http://www.efchairs.com)

**BCFA**  
member





# TRIDENT



Trident TRID 2

## Trident Specification

- Aluminium frame
- Decorative back
- CMHR foam throughout
- Brushed lacquer, solid and scratch-resistant wood grain finishes available
- Moulded seat cushion
- Stacking rails & brace bars
- Concealed handhold available
- Fully concealed fastenings
- Clear plastic feet
- Stacking 10 pcs
- Options: Arms, linking, logos, chair covers, trolley

## Dimensions

W45cm D58cm H94cm

Seat Height 46cm

Weight: 6.5kg



Trident TRID 1



Trident TRID 2





# TRIDENT



Model: Trident TRID 1





# TRIDENT



Trident TRID 3



Taj Hotel Buckingham Gate London





# TRIDENT



Trident TRID 4



Impressive hand finished back with fully concealed fastenings

The specification of all chairs in the Trident range is shown on page 1.

Tested & approved to BS EN 16139 the latest harmonised European standard for furniture strength, durability and safety. The Trident range has approval to Test Level 2 – Extreme use.





# TRIDENT



Trident TRID 1



**BCFA**  
member



Excalibur Furniture Ltd 500 Avebury Boulevard Milton Keynes Buckinghamshire MK9 2BE England  
Tel +44 (0) 1908 327100 [sales@efchairs.com](mailto:sales@efchairs.com) [www.efchairs.com](http://www.efchairs.com)



# EXCALIBUR *furniture*



## ACCESSORIES

[www.efchairs.com](http://www.efchairs.com)





# LECTERNS

Excalibur offers a refreshing selection of quality lecterns including our CLEARLY DIFFERENT™ acrylic designs through to more traditional wooden designs.

Our unique Mobile Meeting Caddie™ also doubles up as a mobile lectern with the five wheels enabling ease of movement with stability and each unit features a removable writing slope.



L1



Logo style on L2



Optional Light



L2



# LECTERNS

Popular lectern features and options include cable management, client's logos, lights and covers.

*Please visit the Accessories section of our website and select the Lecterns section to see our latest range and for specifying/ordering instructions.*



L3



L5



L4



L6



# COCKTAIL TABLES

Excalibur offers a selection of cocktail tables including space saving flip top versions, fixed pedestal bases and height adjustable tables.

Most of our tables are suitable for indoor and outdoor use (dependant on the top finish chosen) and we offer a choice of table top finishing and edging.

*Please visit the Accessories section of our website and select the Cocktail Tables section to see our latest range and for specifying/ordering instructions.*





# EXCALIBAR™

EXCALIBAR™ is a fully demountable mobile bar system for the hotel & hospitality industry.

Simple to set up and break down EXCALIBAR™ can be up and running in a matter of minutes with no tools required and after use EXCALIBAR™ stores safely in the two special purpose bags as shown on page 7.

The bar dimensions are 150cm long x 110cm high x 60cm deep with features including the ice well and speed rail for bottle storage. There is a variety of finishes available for the EXCALIBAR™ and options including a corner unit, LED lit tops and clients branding.

We also offer removable logos allowing our clients to offer their clients branding of their own – ideal for corporate days.



The EXCALIBAR™ has an aluminium frame and is ideal for use inside or out.





Stage 1



Stage 2



Stage 3



Stage 4



Ready to use



Ice Tray  
& Speed Rail



Optional Corner  
Stage 1



Optional Corner  
Stage 2



Optional Corner  
Ready to use



Two bags per bar



Protective interior



Easy to  
move wheels



Excalibar™ & Portable Screen  
(see pages 10 & 11)



Excalibar™ with optional  
corner and portable room  
screen (see pages 10 & 11)



Optional LED Top



# EMBROIDERY

We have tremendous experience in this area and we will embroider anything from a simple name or logo in a single thread colour up to more intricate, multi coloured designs.

Our in house design team enable us to offer an efficient, design and sampling service and for all qualified enquiries this service is free of charge

Our pricing is very competitive so if you would like to consider an embroidered logo on your chairs please contact our sales office.





# TABLE & CHAIR COVERS

Excalibur offers made to measure chair covers and Silcra stretch covers for chairs, cocktail tables and banquet tables.

Silcra stretch covers are available for the following table sizes

Cocktail Tables	Banquet Tables
60cm Dia	120cm Dia
70cm Dia	150cm Dia
75cm Dia	160cm Dia
80cm Dia	180cm Dia
85cm Dia	120 x 75cm
	150 x 75cm
	160 x 75cm
	180 x 75cm

The Silcra stretch covers help to create a contemporary setting and there are twenty colour options. Practical benefits include the fact these covers are washable up to 40 degrees and they do not need ironing before use.





# PORTABLE ROOM SCREENS

Excalibur Portable Room Screens are exceptionally easy to manoeuvre and are ideal for temporarily screening off areas or room dividing.

There is a choice of twenty screen sizes with important features including the aluminium construction, patented full end panel which ensures stability in all configurations, locking casters, no pinch hinges, tackable panels and optional logos.

There is a wide selection of screens fabrics available please visit the Accessories section of our website and select the Mobile Screens section to see full specifying/ordering instructions.





# PORTABLE ROOM SCREENS

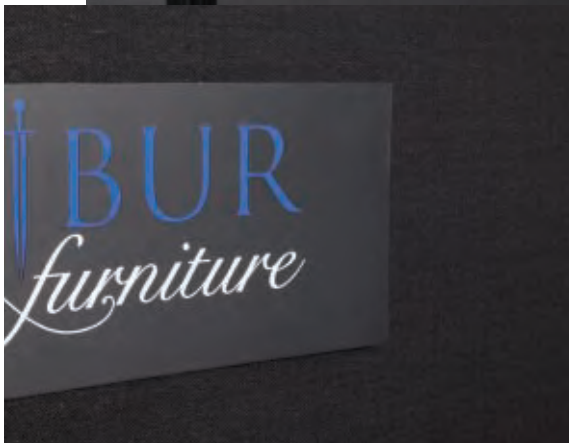


*Black, Silver or Gold frame finishes available*

*There is a choice of five heights and four length options for each height as follows:*

Optional Logo

4' x 8'6"	6' x 8'6"	7'6" x 8'6"
4' x 14'	6' x 14'	7'6" x 14'
4' x 19'6"	6' x 19'6"	7'6" x 19'6"
4' x 25'	6' x 25'	7'6" x 25'
5' x 8'6"	6'10" x 8'6"	
5' x 14'	6'10" x 14'	
5' x 19'6"	6'10" x 19'6"	
5' x 25'	6'10" x 25'	



Velcro



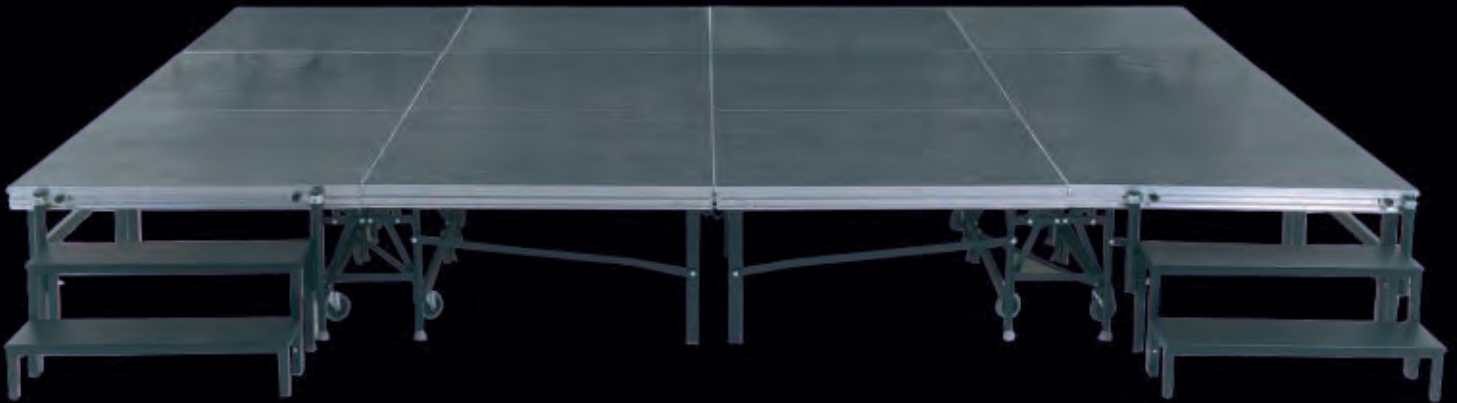
Tackable



# MOBILE FOLDING STAGES

Easy for one person to set up and break down and when it's not in use our Mobile Folding Stage simply rolls away for storage.

Six sections when folded and stored take up a floor area of just 2.5 x 1.5M



Six Mobile Folding Stages linked together with two step units

## Dimensions

Stage Length 2.5m x Width 1.25m Height 40cm

Stage Length 2.5m x Width 1.25m Height 60cm

Stage Length 2.5m x Width 1.25m Height 80cm

Stage Length 2.5m x Width 1.25m Dual Height 40cm - 60cm

Stage Length 2.5m x Width 1.25m Dual Height 60cm - 80cm

One Step Unit (for 40cm stage)

Two Step Unit (for 60cm stage)

Three Step Unit (for 80cm stage)

Hand Rail (for two step unit)

Hand Rail (for three step unit)

High quality aluminium and steel frames with durable stained black beech blockboard platforms mounted on wheels for easy movement.

Alternatively there is a choice of four carpet colours for the platforms (see page 13) and four matching skirting colours are available.



Stage 1



Stage 2



Ready to Use



# MOBILE FOLDING STAGES

Options include chair stops, guardrails, caddies for guard rail storage, hand rails, step units and stage skirting.

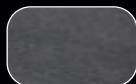


Mobile Folding Stages linked together with guard rails.



Each unit opens out in seconds and to join platforms together simply insert the linking wedge and secure with the allen key provided.

For space planning advice please contact the sales office.



Black Beech Blockboard



Anthracite Carpet



Deep Blue Carpet



Dark grey Carpet



Dark Red Carpet



Positive Locking Mechanism



Link with Linking Wedge



Step Unit



# PRAKTIKUS™ STAGING

Praktikus is a high quality aluminium framed staging system that is easily assembled by slotting aluminium legs into the corners of the platforms and these are held tight with the turn of a hand clamp. The aluminium legs have adjustable feet to allow for uneven floor .



Praktikus staging linked together with guard rails and a three step unit.

## Dimensions

Stage Length 100cm x Width 100cm Height 400mm

Stage Length 100cm x Width 100cm Height 600mm

Stage Length 100cm x Width 100cm Height 800mm

Stage Length 100cm x Width 200cm Height 400mm

Stage Length 100cm x Width 200cm Height 600mm

Stage Length 100cm x Width 200cm Height 800mm

One Step Unit (for 400mm stage)

Two Step Unit (for 600mm stage)

Three Step Unit (for 800mm stage)

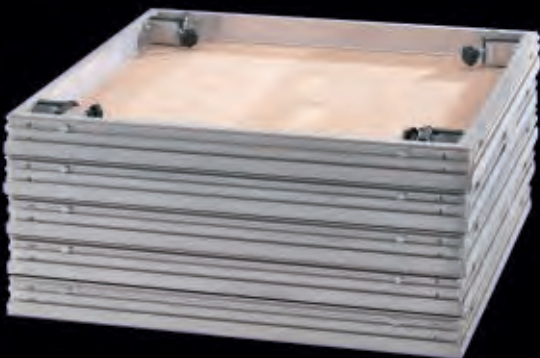
Hand Rail (for two step unit)

Hand Rail (for three step unit)

Platform trolley for Length 100cm x Width 100cm (holds 15 platforms)

Platform trolley for Length 100cm x Width 200cm (holds 12 platforms)

**Praktikus** staging has heavy duty wooden blockboard platforms or there is a choice of four carpet colours (see page 15) matching skirting is available on request.



Platforms



Corner Fixing



Assembly



# PRAKTIKUS™ STAGING

Options include chair stops, guardrails, caddies for guard rail storage, hand rails, step units and stage skirting.

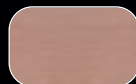


Set up shown with skirting, guard rails and 2 x two step units.



To join platforms together simply insert the linking wedge and secure with the allen key provided.

For space planning advice please contact the sales office.



Wooden Blockboard



Anthracite Carpet



Deep Blue Carpet



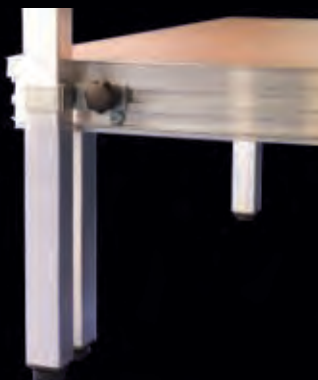
Dark grey Carpet



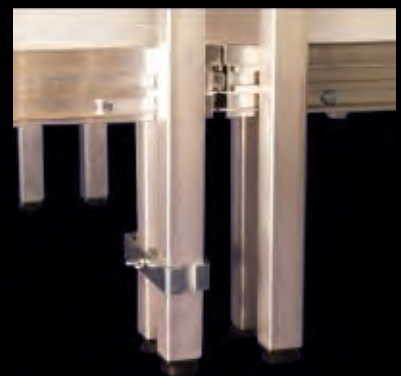
Dark Red Carpet



*Assembled Platform*



*Aluminium Edging Detail*



*Leg connecting bracket*



# ULTRALIGHT STAGING

Ultralight is our third range of portable staging featuring an expanding aluminium frame and a lightweight platform that are quickly and easily assembled and disassembled by one person.

The unique folding aluminium frame opens and closes in seconds and platforms are secured in place using the allen key provided. Stages can be linked together using a similar process.

Ultralight staging has been tested to 1000Kg per square metre for even load distributions.

Ultralight staging is available in several heights including 40cm and 60cm with other heights on request.

*Ultralight staging  
linked together with  
guard rails and two  
steps.*



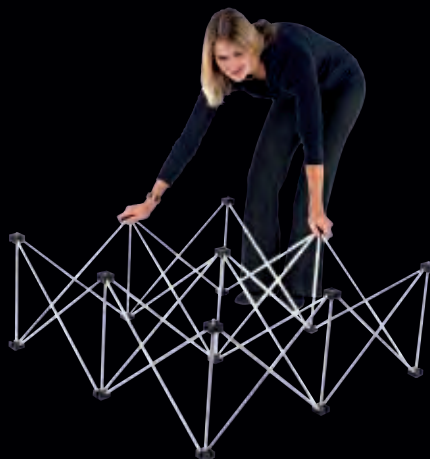
## Dimensions

Platform Length 2m x Width 1m  
Platform Length 1m x Width 1m  
Platform Length 1m x Width 0.52m  
Platform Length 2m x Width 0.52m  
Platform Length 0.52 x Width 0.52m  
Platform Length 1m Triangle  
Platform Length 1m Quadrant

**Ultralight** platforms are covered in black vinyl or a choice of four carpet colours (see page 17).



*Platforms & frames require  
minimum storage area*



*Holding the two pillars extend  
the frame until fully open.*

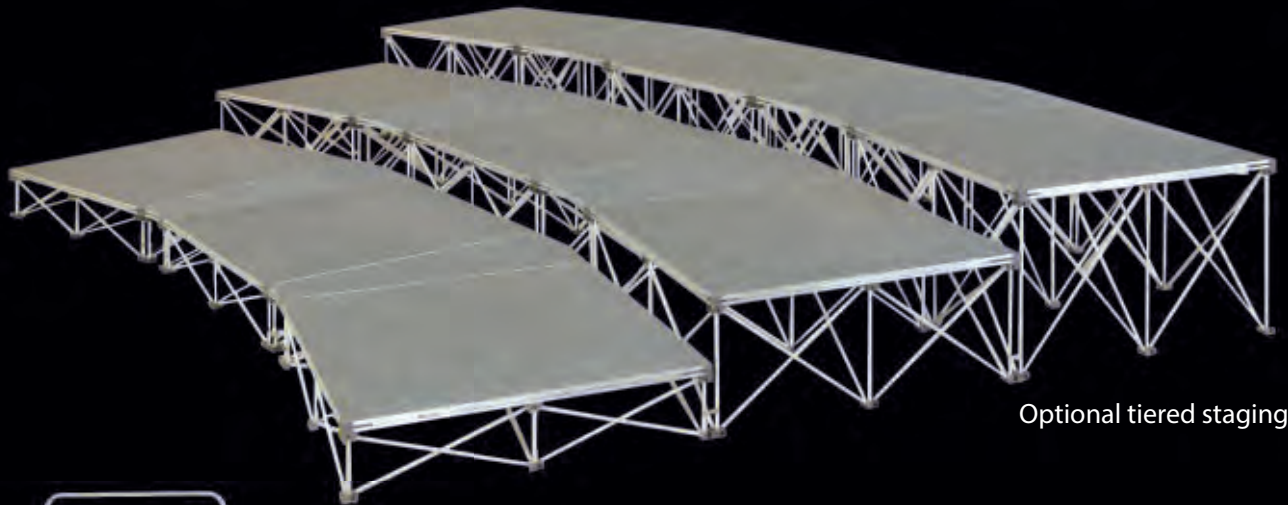


*Place the platform on the frame  
ensuring screws on the frame  
line up with the holes on the  
underside of the platform .*



# ULTRALIGHT STAGING

Options include chair stops, guardrails, caddies for guard rail storage, hand rails, step units, stage skirting and a small and large trolley.



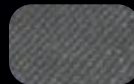
Optional tiered staging



For space planning advice or to see samples please contact the sales office.



Black Vinyl



Anthracite  
grey Carpet



Chianti Red  
Carpet



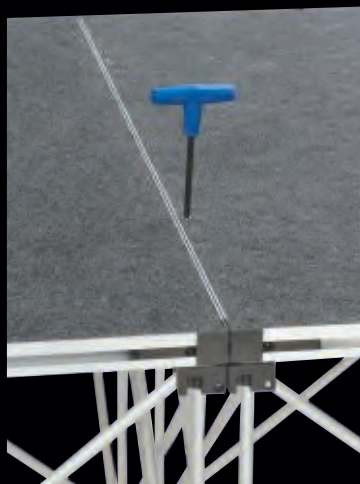
Sapphire  
Blue Carpet



Moss green  
Carpet



Secure the platform and frame  
together with the allen key  
provided



Using the allen key provided  
turn the locking screws in the  
centre of the platform to join  
platforms together



Large trolley stores up to ten  
2m x 1m platforms and risers



# PUBLIC GUIDANCE

Excalibur offers three barrier systems for public guidance use including a new space saving solution that nests when it is not in use and this is equipped with wheels enabling fast and efficient relocation.

Finish choices include polished chrome, polished brass or brushed stainless steel and there is a selection of rope or tape colours.

*Please visit the Accessories section of our website and select the Public Guidance section to see full details along with specifying /ordering instructions.*





# TRIO



TRIO is a steel rod stacking chair available with a chrome plated finish or powder coated in White, grey or Black.

TRIO has an injection moulded polypropylene seat and back with several colour options. Upholstered seat and back pads are available and there is a choice of over 30 colours available as standard.

Options include arms, linking, a removable writing tablet and a special purpose trolley for storage and movement.

## Dimensions

Width: 53cm

Depth: 57cm

Height: 81cm

*Please visit our website for further information or call the sales office.*



TRIO chairs stack 15 high and 35 high on the special purpose trolley.



TR2



TRIO Stack



TR2a



# TRIO



TR1

Trio is a new collection of three cantilever designs intended for dedicated meeting facilities, the TR1 model is also suitable for contemporary banqueting venues where design and comfort are of paramount importance.

The TR1 has a clever floating seat and this is available with a transparent polycarbonate backrest or a black polypropylene backrest.

The TR3M has a low profile moulded seat cushion and a mesh backrest; several mesh colours are available please visit [www.efchairs.com](http://www.efchairs.com) for further information.

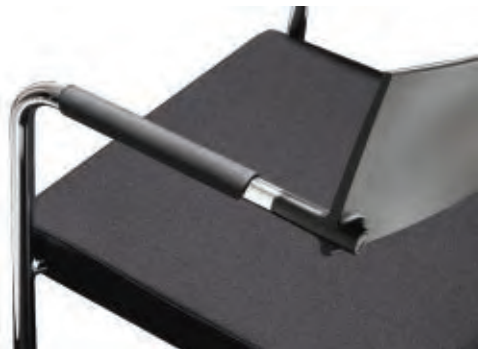
The TR3 has a comfortable double-curvature flex back offering unrivaled comfort and support.

*Please visit our website for further information or call the sales office.*



TR3M

No exposed fastenings



TR3



TR1 Transparent Back

Excalibur Furniture Ltd 500 Avebury Boulevard, Milton Keynes, Buckinghamshire MK9 2BE England  
Tel +44 (0) 1908 327100 [sales@efchairs.com](mailto:sales@efchairs.com) [www.efchairs.com](http://www.efchairs.com)

Issue Q4 2013

All dimensions and weights are a guide only and correct at the time of going to print please check before ordering.

**BCFA**  
member



# EXCALIBUR FURNITURE



[www.efchairs.com.com](http://www.efchairs.com.com)





# TEMPLAR SEATING

Model Code TC3



A classic and visually impressive banqueting chair designed for today's connoisseurs.

With a body responsive flex back and a generous split seat the TEMPLAR chair is extremely comfortable.

The inner back of the chair has a discreet pleated design whilst the outer back can be finished with the clients insignia as the example shown.

## Key Features

All aluminium construction

Flexible backrests

Split seat

Open or concealed handhold

Traditional or modern shape legs

## Fabric

Choose from our collections, specify or supply COM  
0.9 mt per chair

## Dimensions

W 45cm D 60cm H 92cm Seat height 46cm

Stacking 8

Detail showing Client's Insignia



Detail showing Flex





EXCALIBUR  
*furniture*



**BE DIFFERENT**

Meeting Room Tables +



[www.efchairs.com](http://www.efchairs.com)

**BCFA**  
member





# BE DIFFERENT

## Meeting Room Tables +

The **BE DIFFERENT** table system has a superior appearance and these flip top tables are fully mobile saving you valuable space and time. Table trolleys are no longer required and the damage associated with lifting and storage is gone.



2 x D end tables and 2 x rectangular tables shown with TRIO cantilever chairs



Underside of **BE DIFFERENT** flip top table



Tables nest for storage saving space



# BE DIFFERENT

## Meeting Room Tables +

There are five shapes in the **BE DIFFERENT** range as shown below.

Table tops are 25mm thick please see back cover for standard finish options.

	BD1 150 x 70cm BD2 160 x 80cm
	BD3 160 x 80cm
	BD4 160 x 80cm
	BD5 160 x 90cm
	BD6 70 x 70cm BD7 80 x 80cm

**BE DIFFERENT** tables are easily linked together using the special purpose double linking devices fitted to the underside of the table top.

In addition corner units feature four stylish chrome plated elements making it simple to link corners to adjoining tables as shown below.

**Please note:** **BE DIFFERENT** tables are delivered flat pack to save on space and shipping costs and therefore limited unskilled assembly is required.

Simple assembly instructions are provided for each table.

**UK customers** If you would like your tables assembled by us either on or off site we offer an efficient assembly service (please contact the sales office for further information).



Easy to fit



Ready to use



Double linking



# BE DIFFERENT

## Meeting Room Tables +

Rectangular tables from the **BE DIFFERENT** range shown below with an interconnecting corner unit. Dedicated meeting room chairs from the Excalibur TRIO range model TR3 (please visit [www.efchairs.com](http://www.efchairs.com) or contact the sales office for further information)



**BE DIFFERENT** configurations limited only by the imagination.





# BE DIFFERENT

## Meeting Room Tables +

**BE DIFFERENT** is a mobile flip top table system designed for dedicated conference & meeting facilities.

1. As most operators will know regular folding conference tables look good on the day they are delivered but their appearance gets steadily worse as time goes by and damage occurs as a result of everyday handling.

No such problem exists with the **BE DIFFERENT** system as these tables are on wheels making them extremely easy to move around and then for storage table tops flip saving edges from the usual wear & tear.

2. Regular folding conference tables are also heavy thus adding to the time it takes to reconfigure a room.

No such problem exists with the **BE DIFFERENT** system as no lifting is required and rooms can be reconfigured in a matter of moments.

3. Do you always seem to get the table leg when you attend a meeting?

No such problem exists with the **BE DIFFERENT** system as tables are designed to offer minimum leg interference.

4. Table trolleys are a thing of the past as they are not required with **BE DIFFERENT** mobile tables.

5. Simply set up the configuration you require, lock the wheels in place and you are ready to go.





# BE DIFFERENT

## Meeting Room Tables +

The standard range of top finishes for the **BE DIFFERENT** table range are shown below please visit [www.efchairs.com](http://www.efchairs.com) or contact the sales office for further assistance.



Maple



Cherry



Nut



Beech



Elm



Black



Platinum



Wenge



Note: Unless otherwise requested the standard top finish of **BE DIFFERENT** corner units is Wenge as shown opposite.

Please contact the sales office for any assistance.

As **BE DIFFERENT** tables are delivered flat pack to save space and shipping costs; limited unskilled assembly is therefore required; please follow the simple assembly instructions supplied.





EXCALIBUR  
*furniture*



ACE

ALUMINIUM - CONFERENCE - EXHIBITION

[www.efchairs.com](http://www.efchairs.com)



# ACE

## ALUMINIUM - CONFERENCE - EXHIBITION



ACE 1



ACE 2

**ACE** (Aluminium – Conference – Exhibition) is one of our latest collections of upholstered aluminium seating.

**ACE** chairs feature a handy document rack which is permanently fitted beneath the seat and thanks to their design **ACE** chairs still stack to ten high.

Other features include a comfortable low profile seat, lumbar support, a concealed rear handhold and the distinctive stitch detail on the front and back of the chair.

The stacking rails and clear stacking buffers on **ACE** chairs ensure no metal to metal contact and a specially designed self-supporting chair trolley is produced to ensure easy trouble free handling.

### Key Features

- Aluminium Frame
- Strong & Lightweight
- Contemporary Design
- Handy Document Rack under Seat
- Dished Back
- Lumbar Support
- Low Profile Seat
- Stitch Detail
- Concealed Rear Handhold

### Feet

- Clear Plastic Feet

### Frame Finishes

- Brushed, solid and textured finishes available

### Fabric

- Choose from our collections, specify or supply COM 0.8mt per chair

**Stacking:** 10

**Width:** 45cm

**Depth:** 57.5cm

**Height:** 92cm



Concealed Rear Handhold



ACE  
ALUMINIUM - CONFERENCE - EXHIBITION



**Note:** ACE chairs will comfortably stack 10 high but please note due to the document rack permanently fitted beneath the seats a stack of 8 chairs is 215cm high.



# ACE

## ALUMINIUM - CONFERENCE - EXHIBITION



ACE 3

**ACE** chairs are designed to be no nonsense stacking chairs for the ever evolving hotel & hospitality industry.

Product samples are recommended as **ACE** chairs stack significantly better than apparently similar competition.

Each **ACE** model features a clever concealed rear handhold which assists handling whilst retaining a refined appearance.

Bespoke back shapes are available on request and the **ACE** range is bound to expand so please keep an eye on [www.efchairs.com](http://www.efchairs.com)

**Stacking:** 10

**Width:** 45cm

**Depth:** 57.5cm

**Height:** 92cm



ACE 4



**Lumbar Support  
and Stitch Detail**



# ACE

## ALUMINIUM - CONFERENCE - EXHIBITION



**ACE** chairs have a distinctive appearance with strong clean lines and for each of the three shapes in the range there is an inset and full face design.

Conference delegates are free to concentrate on proceedings rather than searching for documents or laptops as these can be safely stored in the handy document rack beneath the seat cushion.

Great for conferencing **ACE** chairs are equally suitable for banqueting use and if required silcra stretch covers or tailored chair covers are available on request.

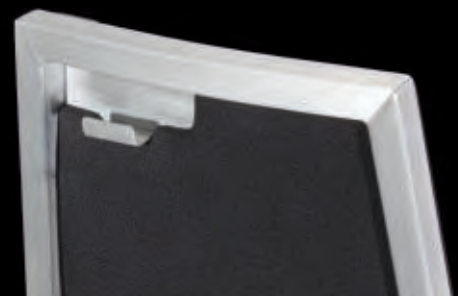
Other options include retractable linking, upholstered armrests, bag hooks, embroidered logos and a self-supporting chair trolley.

**Stacking:** 10

**Width:** 45cm

**Depth:** 57.5cm

**Height:** 92cm



**Optional Bag Hook**





[sales@efchairs.com](mailto:sales@efchairs.com)    [www.efchairs.com](http://www.efchairs.com)

500 Avebury Boulevard, Milton Keynes,  
Buckinghamshire, MK9 2BE England  
Telephone: +44 (0) 1908 327 100

All finishes and weights are a guide only and correct at time of going to print.  
Please check before ordering.  
Issue 01/2014.



**BCFA**  
member





SCIMITAR

Flex Backs

Dual Profile Aluminium

Optional Bumper Edge



**BCFA**  
member





# SCIMITAR



Flex Back

Scimitar chairs have body responsive flex back that automatically adjust to movement.

Chair backs are dished providing a high level of comfort and support and the upholstered back of the chair is set within an aluminium surround or an optional bumper edge.

Clever concealed handholds are standard and open handholds are available as a no cost option.

Clear non-marking chairs feet are standard and self-levelling glides are available.

## Measurements

Width: 45cm Depth: 61cm Height: 90cm

Weight: 7.5kg Stack: 8 high



Scimitar S2



Scimitar S1



Scimitar S2

Stackable 6-8 high; choose from a selection of solid, brushed or wood grain frame finishes with an extensive collection of recommended FR fabrics; alternatively we are happy to accept COM or customer specifications.



**BCFA**  
member

